



PENTHOUSE 2 BEDROOMS 2 BATHROOMS IN MARBELLA

📍 Marbella

REF# R5146078 410.000 €

BEDS

2

BATHS

2

BUILT

88 m²

TERRACE

35 m²

Magnificent Renovated Penthouse in Prestigious Lorcrimar III, Nueva Andalucía – Southwest-Facing Terrace with Sea Views, Steps from Puerto Banús!

Elevate your lifestyle in this stunning renovated penthouse in the exclusive Lorcrimar III urbanization, Nueva Andalucía – a true gem in Marbella's most sought-after enclave. Spanning 102 m² with 2 bedrooms, 2 bathrooms, and a spacious living-dining room opening onto a generous 25 m² southwest-facing terrace, this property bathes in natural light and offers panoramic views. As the only penthouse in the community to include 2 garage spaces and a storage room, it stands out with unmatched value and convenience.

Key Features:

Prime Layout and Renovation: Thoughtfully reformed interiors featuring a bright living-dining area with direct terrace access, perfect for entertaining or relaxation.

Exclusive Amenities: 2 bedrooms for comfort, 2 modern bathrooms, and that expansive 25 m² terrace ideal for al fresco dining under the Costa del Sol sun.

+34 951 123 083 | +44 (0)330 179 8687 | info@idiliqestates.com Local 28, Edificio D, Centro de Negocios Puerta de Banús, N-340, Km 175, 29660 Nueva Andalucía

IDILIQ

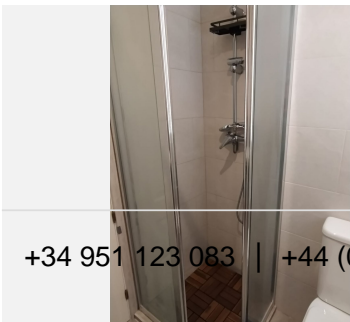
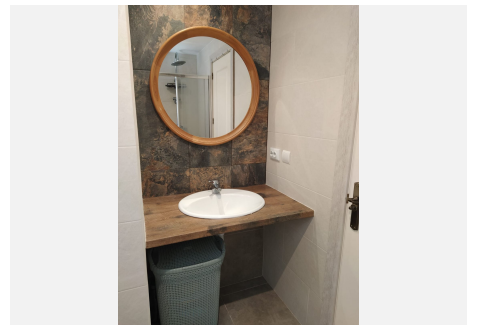
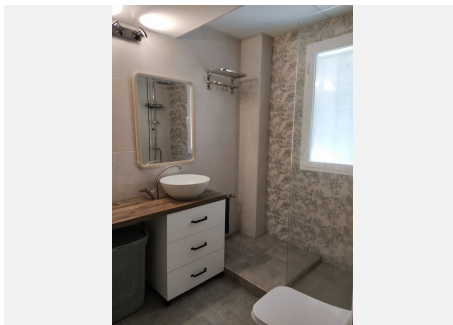
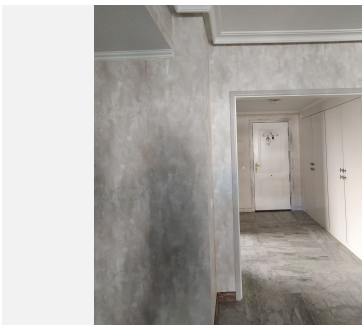
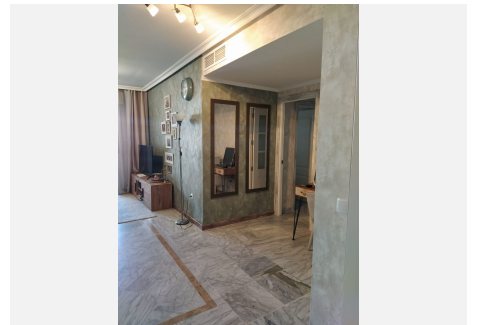
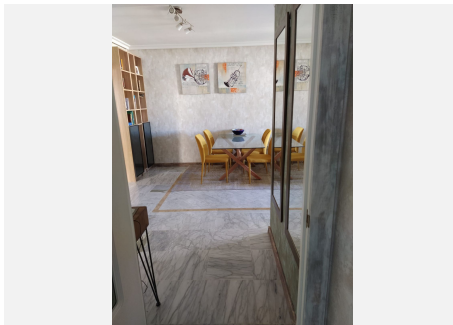
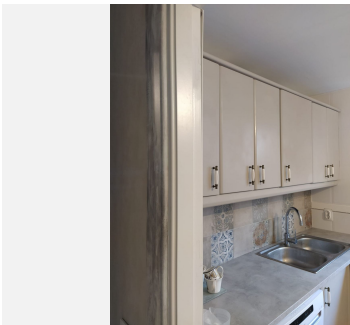
ESTATES

Gated Community Perks: Secure, tranquil setting with lush tropical gardens, 2 pools (including a children's pool), 3 padel courts, and fully adapted access for reduced mobility – all meticulously maintained.

Unrivalled Location: Just steps from Mistral Beach and a mere 5-minute walk to the glamour of Puerto Banús; surrounded by supermarkets, schools, public transport, top sports facilities like Real Padel Club Marbella, renowned golf courses, and tennis clubs.

Added Value: Includes 2 underground parking spaces and private storage – a rare bonus in this premium area.

This is the perfect year-round residence or smart investment in one of the Costa del Sol's most exclusive and high-demand zones. Don't miss this unique opportunity – contact us for a private viewing today!



+34 951 123 083 | +44 (0)330 179 8687 | info@idiliqestates.com Local 28, Edificio D, Centro de Negocios Puerta de Banús, N-340, Km 175, 29660 Nueva Andalucía

IDILIQ

ESTATES

