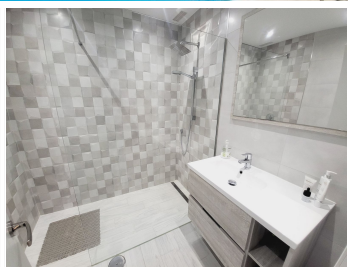
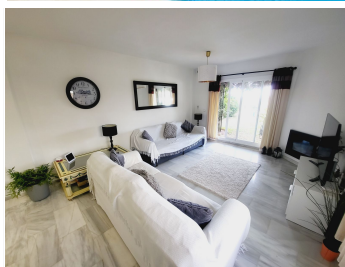


IDILIQ

ESTATES



R4841746

📍 Calahonda

REF# R4841746 275.000 €

BEDS

2

BATHS

2

BUILT

98 m²

TERRACE

17 m²

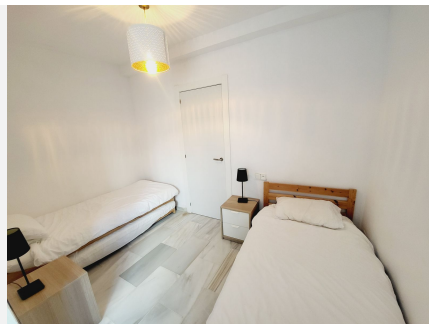
SUPER TWO BEDROOM TWO BATHROOM APARTMENT WHICH HAS BEEN RECENTLY RENOVATED AND IS PRESENTED IN IMMACULATE CONDITION. LOCATED IN MID-CALAHONDA CLOSE TO A NUMBER OF LOCAL AMENITIES AS WELL AS BEING ON THE BUS ROUTE SERVING CALAHONDA TO THE MIRAMAR SHOPPING CENTRE IN FUENGIROLA. THE APARTMENT ITSELF IS SITUATED ON THE GROUND FLOOR OF THE COMPLEX WITH THE LOUNGE OPENING UP ON TO A COMMUNAL GARDEN AREA WHICH HAS THE FEEL OF BEING A PRIVATE SPACE. THERE IS ALSO A TERRACE AREA THAT IS IDEAL FOR DINING AL-FRESCO STYLE. INTERNALLY THE APARTMENT IS IN FANTASTIC CONDITION AND BRIEFLY COMPRISES OF A LARGE OPEN-PLAN LIVING SPACE WITH A MODERN WHITE HIGH GLOSS KITCHEN THAT HAS GRANITE WORKTOPS AND BREAKFAST BAR THAT OPENS TO A VERY SPACIOUS LOUNGE. AN INTERNAL HALLWAY LEADS TO A GUEST BEDROOM FURNISHED WITH TWO SINGLES, MODERNISED GUEST SHOWER ROOM, GENEROUSLY PROPORTIONED MASTER BEDROOM WITH AMPLE FITTED WARDROBES AND A SUPERB EN-SUITE BATHROOM WITH A GREAT SIZED WALK-IN SHOWER. THE COMMUNITY HAS EXTENSIVE GARDENS AND A STUNNING POOL AREA THAT HAS THE MEDITERRANEAN AS A BACKDROP TO RELAX BY AND SOAK UP THE SUN. FOR COOLER DAYS OR DURING WINTER

+34 951 123 083 | +44 (0)330 179 8687 | info@idiliqestates.com Local 28, Edificio D, Centro de Negocios Puerta de Banús, N-340, Km 175, 29660 Nueva Andlucia

IDILIQ

ESTATES

MONTHS THERE IS A GOOD SIZED INDOOR POOL - A REAL LUXURY AND RARELY ON OFFER. THE PROPERTY CAN BE ACCESSED BY A LIFT FROM THE COMMUNAL PARKING AREA OR FROM A QUIET CUL-DE-SAC WITH ON-STREET PARKING THAT IS ONLY ONE FLIGHT OF STAIRS BELOW THE PROPERTY LEVEL. THIS IS A GREAT APARTMENT, READY TO MOVE INTO AND HAS A VERY ATTRACTIVE PRICE-TAG FOR ALL THAT IT HAS TO OFFER.



IDILIQ

ESTATES

