

IDILIQ

ESTATES



R4700629

 Nueva Andalucía

REF# R4700629 900.000 €

BEDS

2

BATHS

2

BUILT

219 m²

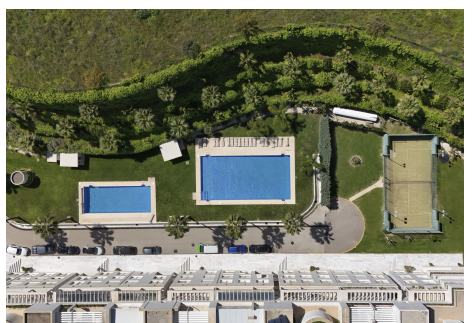
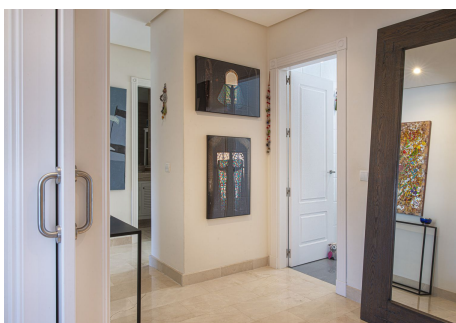
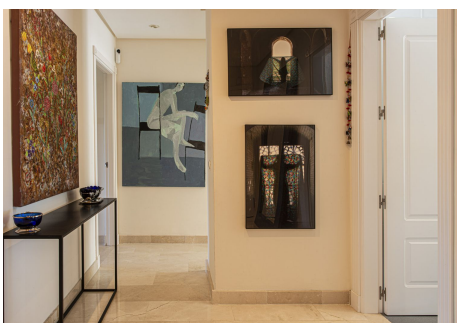
TERRACE

53 m²

Panoramic views of La Concha and the Las Brisas golf course, with partial sea views from the terrace, it is ideally located in between 4 different golf courses within less than a 5 minute drive: Las Brisas Golf Club, Magna Marbella Golf Club, Los Naranjos Golf Club, and Aloha Golf Club. To get to Puerto Banus and amenities it is only an 8 minute drive, with shops, supermarkets & restaurants being even closer. Built to high standards, this large 2 bedroom apartment offers a great layout combined with high quality finishes. The well maintained community with 24 hour security has two pools, one of them with a cover heating system, and a paddle court. It is ideal for living or renting out long-term as its central location within the Golf Valley makes it a fantastic and viable year-round investment. Included in the price are 2 parking spaces and a storage room.

IDILIQ

ESTATES



IDILIQ

ESTATES

