



R4870570

📍 Elviria

REF# R4870570 698.000 €

BEDS

3

BATHS

2.5

BUILT

178 m<sup>2</sup>

PLOT

438 m<sup>2</sup>

TERRACE

52 m<sup>2</sup>

Exclusive corner townhouse in the heart of Elviria, approx. 10 minutes walk to the beach with a lovely large garden. It has been tastefully renovated and has automated irrigation, hot and cold air conditioning and double glazed windows for the entire home. The distribution is as follows: On the ground level we find a bright and cozy living-dining room with fireplace, toilet and kitchen. The living room has access to the covered terrace that also has a barbecue. From the terrace you can go to the spacious and sunny garden with south-west orientation. The first floor features the master bedroom with a large terrace that overlooks the garden and also has pleasant sea views. On this same level there is a bathroom and the second bedroom with access to a terrace. The second floor has a bedroom, a bathroom and a beautiful terrace with beautiful views of the sea. From this terrace there are stairs to access the tower, where you can enjoy the beautiful open views towards the sea, the mountains and the green areas of Elviria. The water consumption of the property is included in the community fees.

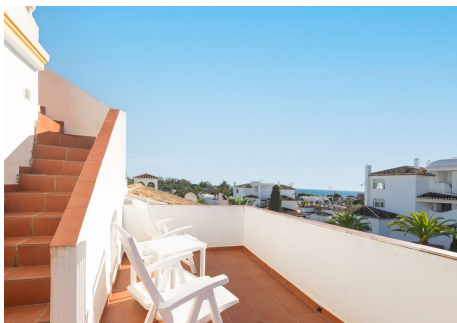
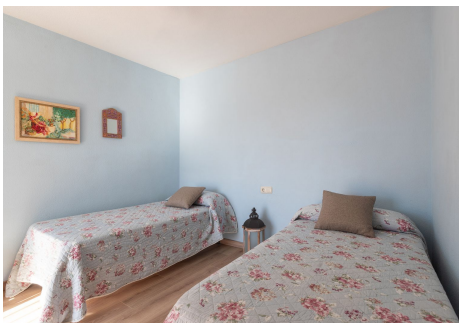
# IDILIQ

ESTATES



# IDILIQ

ESTATES



# IDILIQ

ESTATES

