

# IDILIQ

ESTATES



R4589491

📍 Nueva Andalucía

REF# R4589491 585.000 €

BEDS

2

BATHS

2.5

BUILT

161 m<sup>2</sup>

TERRACE

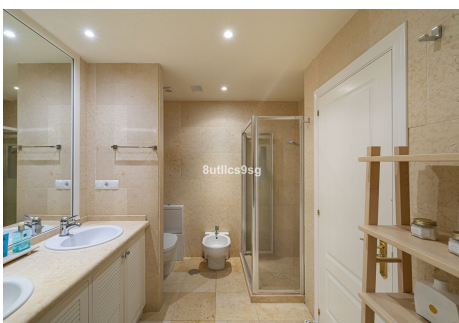
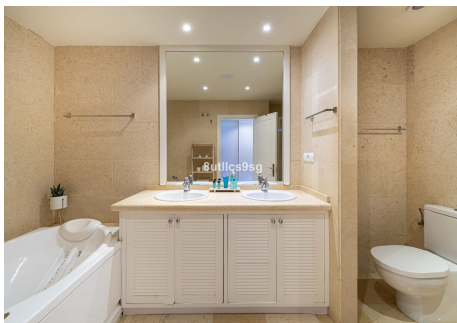
32 m<sup>2</sup>

Large size apartment with panoramic views to Gibraltar, front line golf, in Magna Marbella, in Nueva Andalucía - Golf Valley. The apartment has 2 bedrooms, 2 bathrooms en suite and a guest toilet. It has a total of 161 m<sup>2</sup> of which 129 m<sup>2</sup> are interior. Fully equipped kitchen, including washer and dryer, large living room with access to a terrace of over 30 m<sup>2</sup> with panoramic views. Two large bedrooms with fitted closets. The master bedroom with access to the terrace and bathroom with bath and shower. The property is in very good condition. It has air conditioning and underfloor heating that can be managed by zones. A parking space and a storage room included in the price. Magna Marbella is located in the heart of Nueva Andalucía, just minutes from Puerto Banus and the best golf courses in Marbella: Las Brisas Golf, Los Naranjos Golf and Aloha Golf. On the front line of Magna Marbella Golf and very close to Magna Café, one of the best restaurants in Marbella.



# IDILIQ

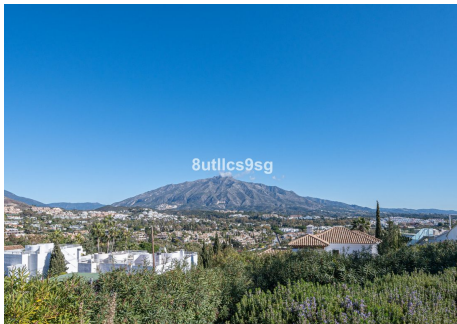
ESTATES





# IDILIQ

ESTATES



Superficies  
 Vivienda= 129.00m<sup>2</sup>  
 Terraza= 32.00m<sup>2</sup>  
 Total= 161.00m<sup>2</sup>

1:100 0 1 2 3 4