



R5176522

 Elviria

REF# R5176522 2.250.000 €

BEDS

4

BATHS

4.5

BUILT

429 m²

PLOT

1100 m²

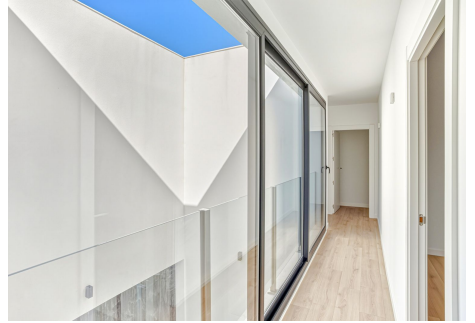
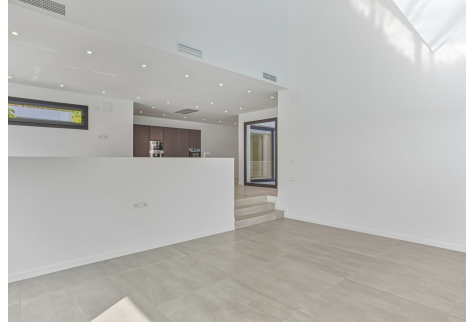
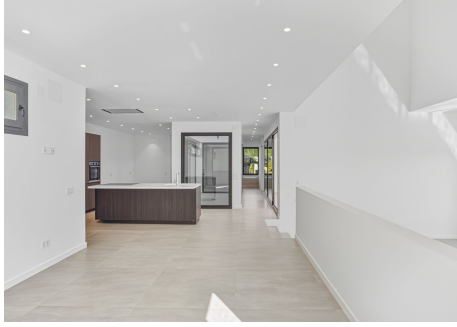
Luxurious and exclusive newly built villa located in Elviria, near the Santa M^a Golf course. The house has been built in high quality and in a modern style and has beautiful open views towards the sea. It is distributed over two floors plus the basement, and has an elevator that connects all the floors.

On the ground floor there is an en-suite bedroom, a bright and spacious living room, an open plan kitchen connected to the living room and a large terrace with beautiful open views and access to the pool and garden area. On the first floor we find another three bedrooms, all of them with en-suite bathrooms, and the access to the large solarium to enjoy the best views.

In the basement is the garage with space for two cars and an extra bedroom that could be used for a gym, cinema, etc.

IDILIQ

ESTATES



IDILIQ

ESTATES



IDILIQ

ESTATES

