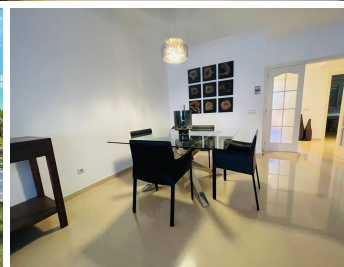
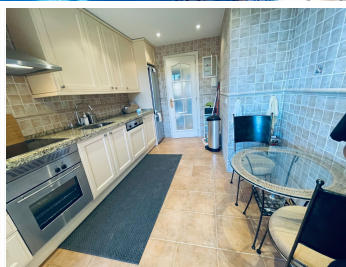
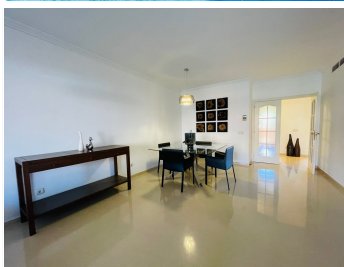


# IDILIQ

ESTATES



R4964431

📍 Puerto Banús

REF# R4964431 650.000 €

BEDS

2

BATHS

2

BUILT

130 m<sup>2</sup>

TERRACE

15 m<sup>2</sup>

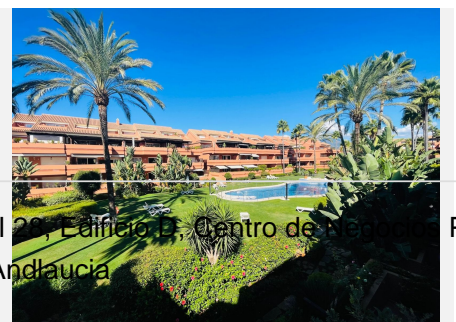
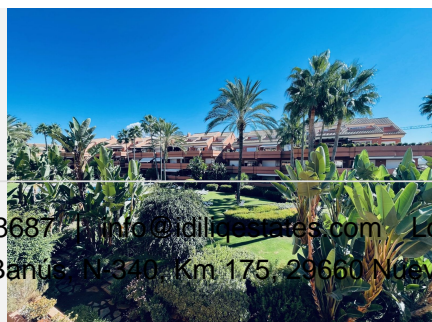
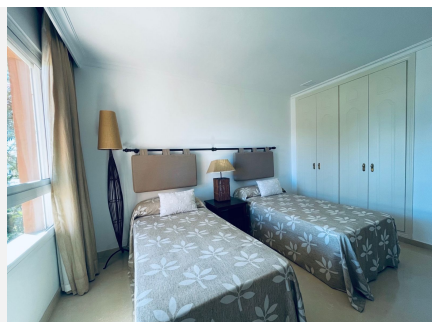
Situated in the secure and gated community of El Embrujo Playa, this exquisite apartment offers an unparalleled lifestyle in the heart of Marbella, near Puerto Banus. Walking distance to the beaches & local shops, close to schools, golf courses, and the vibrant town of San Pedro and Puerto Banus marina. This property is ideal for those seeking a blend of comfort, convenience, and luxury. The apartment boasts 2 spacious bedrooms, including 1 with an en-suite bathroom, and an additional well-appointed bathroom. A total built area of 130m<sup>2</sup> is complemented by a private 15m<sup>2</sup> terrace, offering a serene garden view. The interior features a fully fitted kitchen, an open plan living room with dining area, all designed with attention to detail. High-quality finishes, such as marble floors and double glazing, enhance the overall aesthetic and functionality. The property is offered in good condition and is to be sold fully furnished, ensuring a seamless move-in experience. The private terrace and covered terrace spaces provide ideal spots for relaxation. The apartment is situated within a gated community with 24-hour security services, ensuring peace of mind. Additional conveniences include a lift, a private storage room, and a private garage space in the underground car park. The communal areas are equally impressive, featuring a beautifully maintained garden and a large swimming pool. The development is family-friendly. A doorman service adds an extra layer of convenience, while the beachside location ensures that the sea is just a short stroll away. This

+34 951 123 083 | +44 (0)330 179 8687 | info@idiliqestates.com Local 28, Edificio D, Centro de Negocios Puerta de Banús, N-340, Km 175, 29660 Nueva Andlucia

# IDILIQ

ESTATES

property seamlessly combines a prime location with a wealth of features, making it a standout option in Marbella's property market.



+34 951 123 083 | +44 (0)330 179 8687 | [info@idiliquestates.com](mailto:info@idiliquestates.com) | Local 20, Edificio B, Centro de Negocios de Banús, s/n, 34011, Km 175, 29660 Nueva Andalucía

Puerta