



R4687561

📍 Nueva Andalucía

REF# R4687561 1.550.000 €

BEDS

5

BATHS

4.5

BUILT

450 m<sup>2</sup>

PLOT

1000 m<sup>2</sup>

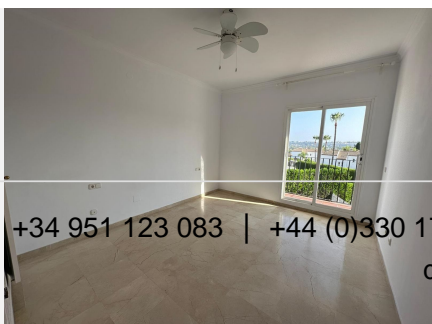
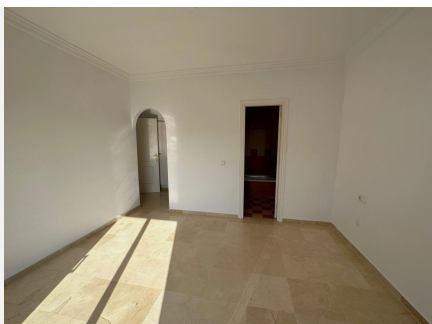
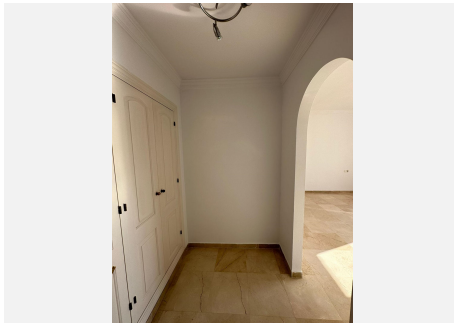
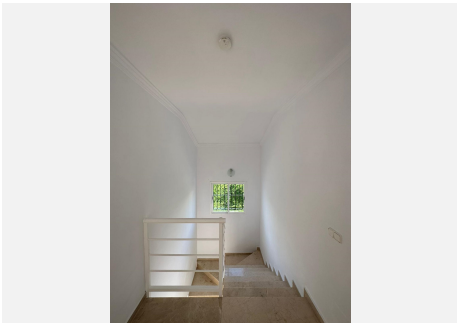
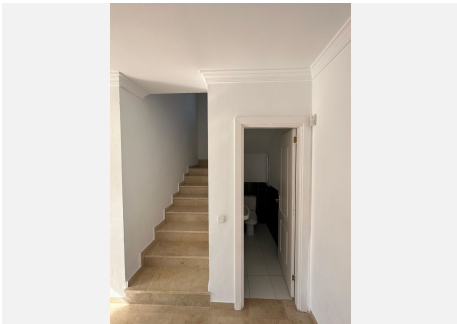
This stunning luxury villa is located in the prestigious Marbella Country Club, in the heart of Nueva Andalucía valley. With its traditional design and south west orientation, this property is a true bright and spacious family home. Spread over two levels, the ground floor of the villa features a spacious living and dining room, complete with a working fireplace, creating a warm and inviting atmosphere. From here, you can access the covered terrace and beautifully private garden, perfect for enjoying the Mediterranean climate. The fully fitted kitchen is spacious and has an adjacent pantry, 2 large windows, plus access to the garden. On this level, you will also find a guest bedroom with an en-suite bathroom, in addition to a guest toilet. Moving upstairs, you will discover the remaining bedrooms, including the master suite with its own en-suite bathroom and a dressing area. Each bedroom is thoughtfully designed with comfort and relaxation in mind, with beautiful views and access to an uncovered terrace. The villa is well positioned on the plot, with ample garden surrounding the house on all sides, parking for various cars, and a private swimming pool. The villa also boasts a private terrace, where you can enjoy al fresco dining or simply unwind while taking in the stunning garden and pool views. Situated in a gated community, this property offers a high level of security and peace of mind. The property is in good condition and is sold unfurnished, allowing you to personalize the space to your own taste. The location of this villa is truly unbeatable. It is close to a wide

+34 951 123 083 | +44 (0)330 179 8687 | info@idiliqestates.com Local 28, Edificio D, Centro de Negocios Puerta de Banús, N-340, Km 175, 29660 Nueva Andalucía

# IDILIQ

ESTATES

range of amenities, including shops, schools, beaches, several golf courses and the famous Puerto Banus Marina.



+34 951 123 083 | +44 (0)330 179 8687 | [info@idiliqestates.com](mailto:info@idiliqestates.com) Local 28, Edificio D, Centro de Negocios Puerta de Banús, N-340, Km 175, 29660 Nueva Andalucía



# IDILIQ

ESTATES

