



R4879759

📍 Casares

REF# R4879759    257.500 €

BEDS

2

BATHS

2

BUILT

62 m<sup>2</sup>

PLOT

62 m<sup>2</sup>

TERRACE

105 m<sup>2</sup>

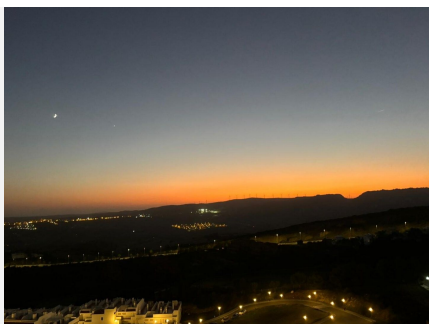
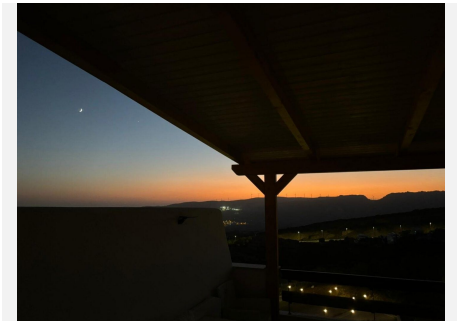
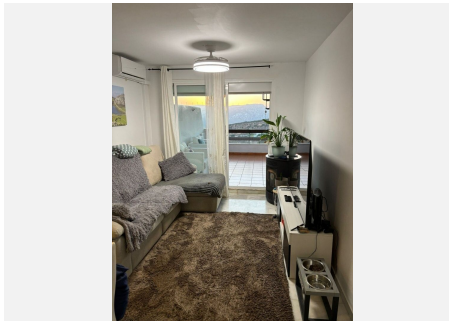
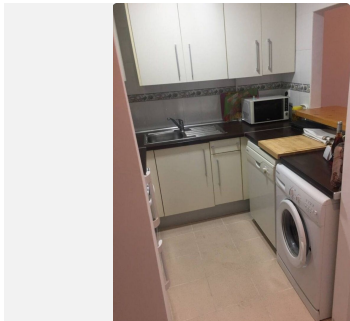
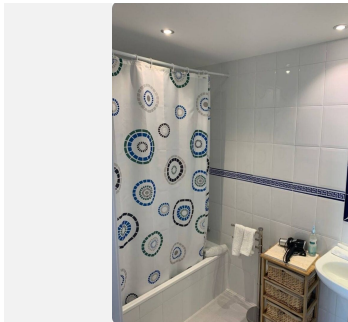
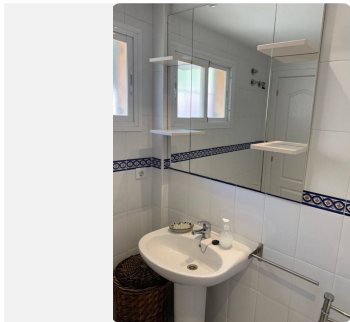
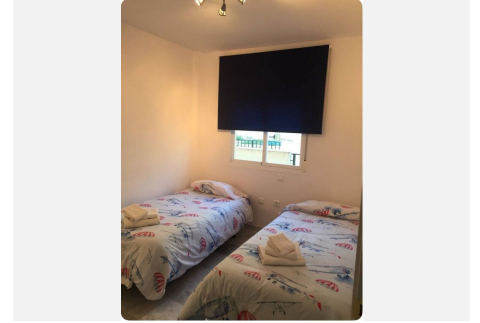
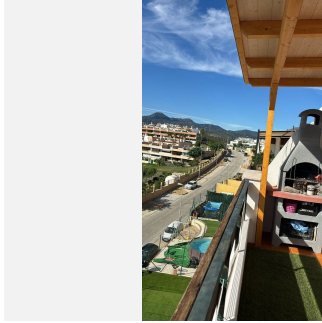
Spectacular Penthouse in a Dream Home Surrounded by Nature and Golf Courses Discover this impressive penthouse in the exclusive , located in a privileged area surrounded by beautiful golf courses and stunning natural landscapes. This exceptional property is the ideal blend of modern comfort and serene elegance, overlooking the beach and panoramic views that are truly breathtaking. Property Features: Spacious and Bright Layout: The apartment offers two luminous bedrooms with fitted wardrobes, two bathrooms (one en-suite in the master bedroom), and an open-concept, fully equipped American-style kitchen. Living Area & Terrace: The kitchen opens up to a bright living room that leads directly to a large 30-square-meter terrace, offering spectacular views of both the mountains and the sea. This expansive outdoor space is perfect for entertaining, dining al fresco, or simply relaxing with a view. Private Solarium: From the terrace, a spiral staircase leads to an incredible 75-square-meter solarium with 360-degree views. This rooftop space is perfect for setting up a barbecue area, installing a jacuzzi, or creating a private oasis for sunbathing and unwinding. Amenities & Location: The property also includes a designated parking space in a secure garage. Located just 5 minutes from the beach, this penthouse combines natural beauty with convenience, offering easy access to the coast while nestled in a tranquil, picturesque setting. This penthouse is ideal for those seeking a peaceful lifestyle without sacrificing modern amenities or accessibility. Don't miss the

+34 951 123 083 | +44 (0)330 179 8687 | [info@idiliqestates.com](mailto:info@idiliqestates.com) Local 28, Edificio D, Centro de Negocios Puerta de Banús, N-340, Km 175, 29660 Nueva Andlucia

# IDILIQ

## ESTATES

chance to own this exceptional property and experience life in one of Casares' most coveted locations!  
Schedule a visit today and see for yourself what makes this home so special!



+34 951 123 088 | +34 (0)330 479 8687 | [info@idiliqstates.com](mailto:info@idiliqstates.com) Local 28, Edificio D, Centro de Negocios Puerta de Banús, N-340, Km 175, 29660 Nueva Andlucia