

IDILIQ

ESTATES



R4922290

 Puerto Banús

REF# R4922290 850.000 €

BEDS

2

BATHS

2

BUILT

130 m²

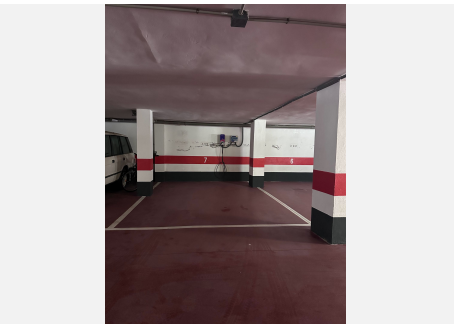
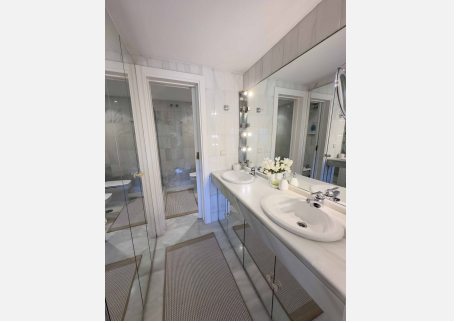
TERRACE

30 m²

Fantastic elevated ground floor in Puerto Banus, full of light with a large terrace that overlooks the gardens, integrated from the inside into nature. 2 large bedrooms with 2 bathrooms. Fully equipped renovated kitchen. A nice and spacious living room. Air conditioning hot / cold. 1 parking space very comfortable. Gardens with fountains, Japanese style wooden bridges and community pool. 3 minutes walk to the beach, shopping centers, restaurants, and hospital.

IDILIQ

ESTATES



IDILIQ

ESTATES

