

IDILIQ

ESTATES



R4340737

📍 Benalmadena

REF# R4340737 1.445.000 €

BEDS

7

BATHS

7

BUILT

307 m²

PLOT

3200 m²

TERRACE

2 m²

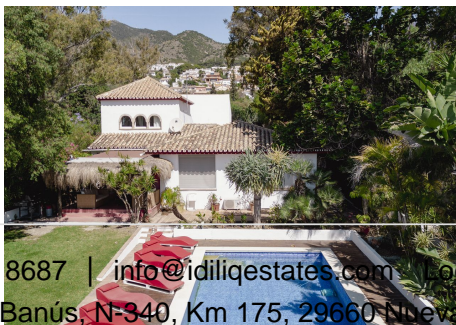
¡NEGOTIABLE! SALE OR RENT WITH OPTION TO PURCHASE, GREAT OPPORTUNITY! HIGH PROFITABILITY. CAPACITY FOR 20 PEOPLE OR MORE. MORE THAN 6 PARKING SPACES. INVESTMENT OR HOUSING. WHAT DO YOU PREFER? MAYBE BOTH? DO YOU WANT TO SET UP A BED AND BREAKFAST? OR BETTER A SPA? HOW ABOUT A BOUTIQUE HOTEL... NATURE CLOSE TO EVERYTHING. DO WE NEGOTIATE? ONE PROPERTY, TWO INDEPENDENT BUILDINGS, possibility of LARGE RENOVATION. DISCOVER THE INVESTMENT OPPORTUNITY OF YOUR DREAMS: A PLACE OF TRANQUILITY IN A BEAUTIFUL SURROUNDING. WELCOME TO YOUR DREAM PROPERTY! IMAGINE SPACIOUS AREAS TO SHARE UNFORGETTABLE MOMENTS, WITHOUT COMPROMISING YOUR PRIVACY. THIS IMPRESSIVE RESIDENCE OFFERS 7 BEDROOMS, 7 BATHROOMS, THREE KITCHENS, LIVING ROOMS, DINING AREAS, AND PARKING SPACE FOR OVER 6 CARS. ENJOY YOUR HEATED SWIMMING POOL, ORGANIZE CHARMING OUTDOOR BBQ GATHERINGS, OR SIMPLY RELAX IN THE LOUNGE OR BAR. IN ADDITION, THE FRUITFUL GARDENS AND BEAUTIFUL SEA VIEWS ADD AN ELEGANT TOUCH TO THIS PARADISE. WITH AN IMPRESSIVE PLOT OF 3,200 SQUARE METERS AND 307.60 SQUARE METERS OF LIVING SPACE, THIS PROPERTY IS PERFECT FOR THOSE LOOKING FOR A HOME TO LIVE IN OR THOSE SEEKING A PROFITABLE

+34 951 123 083 | +44 (0)330 179 8687 | info@idiliqestates.com Local 28, Edificio D, Centro de Negocios Puerta de Banús, N-340, Km 175, 29660 Nueva Andlucia

IDILIQ

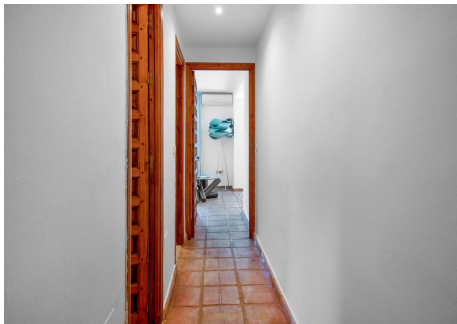
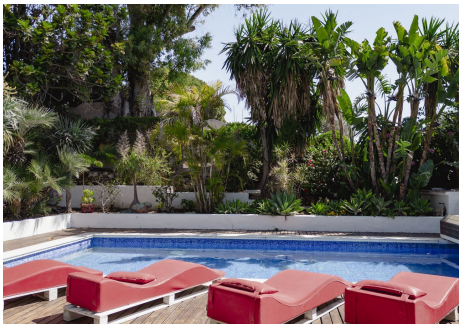
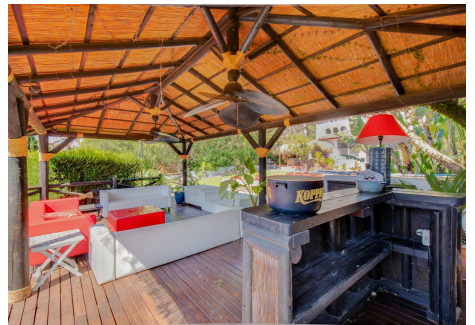
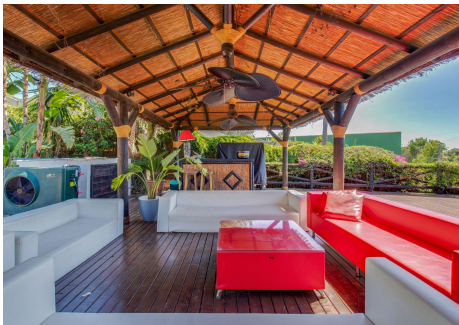
ESTATES

OPPORTUNITY. FURTHERMORE, YOU CAN ENJOY ABSOLUTE PEACE WITHOUT SACRIFICING THE CONVENIENCE OF HAVING EVERYTHING YOU NEED AT YOUR FINGERTIPS. DON'T MISS THE CHANCE TO MAKE YOUR DREAMS COME TRUE. CONTACT US TODAY TO DISCOVER MORE DETAILS ABOUT THIS EXCEPTIONAL PROPERTY! LBB CAPACITY: 20 PEOPLE 7 ROOMS 6 BATHROOMS 1 TOILET 3 KITCHENS MAIN EQUIPPED KITCHEN HIGH-END APPLIANCES HEAT/COLD AIR CONDITIONING 3 LIVING ROOMS 4 DINING ROOMS CLIMATIZED POOL LOUNGE AREA BAR AREA BARBECUE AREA CHILDREN'S AREA 6 or MORE PARKING SPACES TERRACES DESIGN FONT CHIMNEY STORAGE AREA SEMI- BASEMENT IRRIGATION SYSTEM 25 MINUTES FROM AIRPORT (18 KM) 7 MINUTES TO THE BEACH (3.4 KM) 10 MINUTES TO THE HIGHWAY (4.3 KM) Benalmádena Pueblo Benalmádena, Málaga, Andalucía Detached Villa, Benalmadena, Costa del Sol. Built 396 m², Terrace 2 m², Garden/Plot 3200 m². Setting : Close To Golf, Close To Shops, Close To Sea, Close To Town, Close To Schools, Close To Forest. Orientation : South. Views : Sea, Country, Panoramic, Pool. Features : Fitted Wardrobes, Near Transport, Private Terrace, Solarium, Guest Apartment, Guest House, Storage Room, Utility Room, Ensuite Bathroom, Access for people with reduced mobility, Bar, Bbq, Domotics, Near Church, Basement, Handicap access. Furniture : Fully Furnished. Kitchen : Fully Fitted, Kitchen-Lounge. Garden : Private, Easy Maintenance. Parking : 6 or more. Utilities : Electricity, Drinkable Water. Category : Holiday Homes, Investment, Luxury. 1.495.000 € 1.604.061,76 US\$ Lucía Ballén Benítez KW Marbella KW ID: 2206-2474 LBB



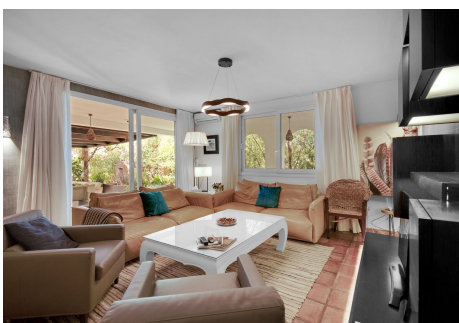
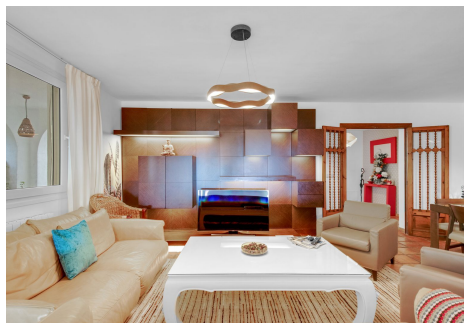
IDILIQ

ESTATES



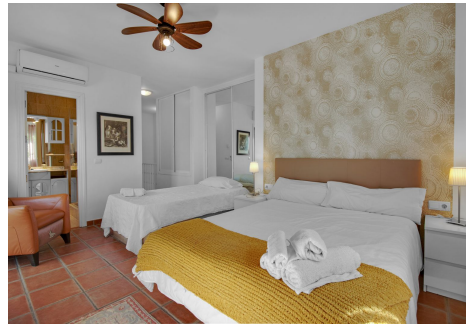
IDILIQ

ESTATES



IDILIQ

ESTATES



IDILIQ

ESTATES

