



R5382472

📍 Calanova Golf

REF# R5382472 2.650.000 €

BEDS

4

BATHS

6

BUILT

1001 m²

PLOT

2437 m²

TERRACE

207 m²

Spacious golf-front villa with sea views and flexible potential!

This representative villa combines generous space, bright living areas and a direct position by the golf course.

The large living and dining area opens onto the covered terrace, the well-kept garden and the pool area.

The open-plan kitchen has a modern design and fits well into the living space.

Several bedrooms, bathrooms and additional living areas provide flexibility for family, guests or working from home.

From the upper floor, the view extends across the golf course towards the sea.

A particular advantage is the very large garage, which offers not only parking but also space for further uses such as a fitness area, spa, hobby room or storage.

Suitable for buyers looking for a spacious home close to golf, with good privacy and flexible possibilities.

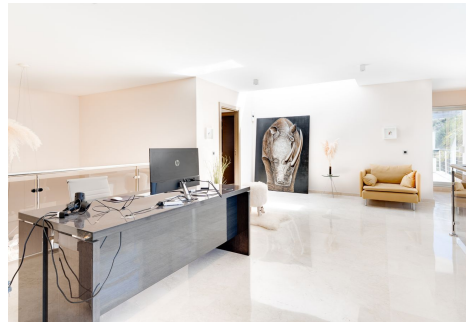
- Direct golf-front position with open green views
- Sea views from the upper floor

+34 951 123 083 | +44 (0)330 179 8687 | info@idiliqestates.com Local 28, Edificio D, Centro de Negocios Puerta de Banús, N-340, Km 175, 29660 Nueva Andlucia

IDILIQ

ESTATES

- ?Large garage ?with potential ?for ?fitness, spa or ?hobby use
- ?Suitable ?for families ?or ?buyers ?needing ?generous ?space ?and ?privacy



IDILIQ

ESTATES

