



R5264494

📍 Elviria

REF# R5264494 620.000 €

BEDS

2

BATHS

2

BUILT

103 m²

TERRACE

35 m²

Magnificent apartment in the prestigious Elviria Hills urbanization, one of the most exclusive and sought-after locations in East Marbella. This elegant 103 m² apartment stands out for its spaciousness, natural light, and unparalleled quality of life on the Costa del Sol.

The property offers two large bedrooms and two full bathrooms with high-end finishes, underfloor heating in the bathrooms, electric blinds in the bedrooms, ample built-in wardrobes, an awning, and central air conditioning and heating. Everything is designed to guarantee comfort and well-being year-round.

The spectacular 35 m² terrace is the apartment's highlight: a perfect space to enjoy the Mediterranean climate with breathtaking views of the sea, the communal garden, and the mountains, thanks to its prime corner location. An ideal spot to relax, unwind, or share unforgettable moments.

The property boasts a south-facing orientation, ensuring abundant natural light throughout the day. Marble floors and a modern layout complete an elegant and welcoming atmosphere. The kitchen, completely renovated 5 years ago, has been opened up to the living room, creating a more spacious, modern area

+34 951 123 083 | +44 (0)330 179 8687 | info@idiliqestates.com Local 28, Edificio D, Centro de Negocios Puerta de Banús, N-340, Km 175, 29660 Nueva Andalucía

connected to the outdoors.

The complex offers top-notch amenities to enjoy without leaving home:

- * Communal swimming pool
- * 2 tennis courts
- * Gym
- * Golf course with academy and driving range
- * Restaurant El Lago

It also includes two parking spaces and one storage room, with direct elevator access to the apartment from the garage.

Its location is unbeatable: just 5 minutes from the Elviria Shopping Centre, with all the necessary services—supermarkets, restaurants, banks, shops—and very close to some of Marbella's best beaches, known for their beach bars and promenades.

It is also ideal for families, as it is just minutes from prestigious international schools such as the German School and the English International College.

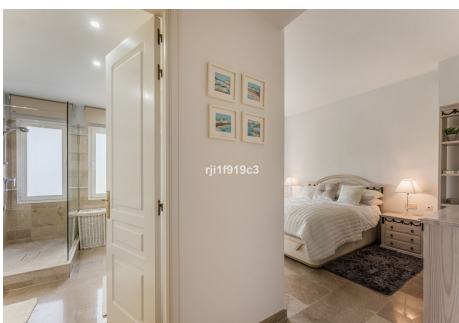
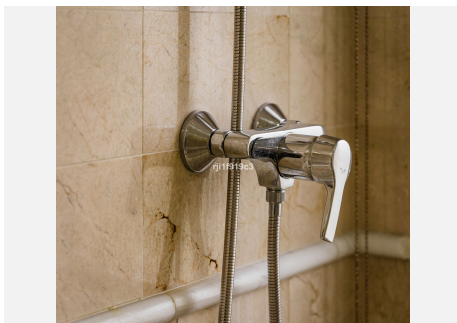
****Key Distances:****

- * Marbella town center: 15 min
- * Puerto Banús: 20 min
- * Málaga Airport: 40 min



IDILIQ

ESTATES



IDILIQ

ESTATES

