



R5348749

 Nueva Andalucía

REF# R5348749 1.375.000 €

BEDS

3

BATHS

3

BUILT

159 m²

TERRACE

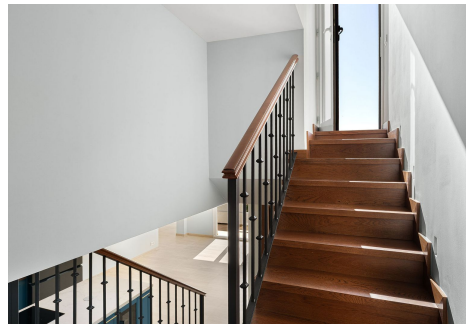
100 m²

Recently fully renovated to an exceptional standard, this stunning penthouse in Pueblo Arabesque offers a perfect blend of elegance, comfort, and "Al Andalus" charm. Boasting three spacious bedrooms and three bathrooms—two of which are en-suite—the property has been thoughtfully designed using high-quality materials throughout. The west-facing orientation allows for beautiful natural light and warm afternoon sun, while a convenient parking bay is located directly outside. All bedrooms feature fitted wardrobes, and the bathrooms are enhanced with luxurious underfloor heating. An advanced Airzone air conditioning system ensures year-round comfort in every room. One of the standout features of this home is its impressive roof terrace, offering both open and covered areas ideal for relaxing or entertaining. A section of the terrace has been enclosed with special down awnings and equipped with air conditioning, creating a versatile second living room that can be enjoyed throughout the year. In addition, a fully fitted outdoor kitchen with all appliances makes this space perfect for hosting guests or enjoying everyday outdoor living. The property is set within beautiful architecture inspired by classic Al-Andalus style, combining character with modern convenience. Ideally located within walking distance to the vibrant Aloha Strip and a variety of shops, restaurants, and amenities. This is truly a unique and exceptional home that must be seen to be fully appreciated.

+34 951 123 083 | +44 (0)330 179 8687 | info@idiliqestates.com Local 28, Edificio D, Centro de Negocios Puerta de Banús, N-340, Km 175, 29660 Nueva Andlucia

IDILIQ

ESTATES

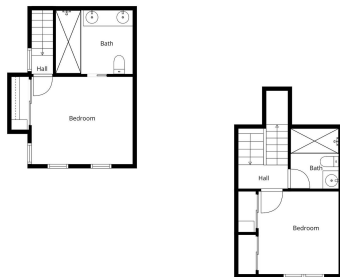


IDILIQ

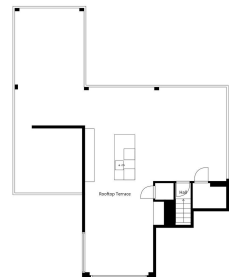
ESTATES



Measurements calculated by Idiliq Realty Models S.A. for the Government



Measurements calculated by Idiliq Realty Models S.A. for the Government



Measurements calculated by Idiliq Realty Models S.A. for the Government

IDILIQ

ESTATES

