



R4713301

 Nueva Andalucía

REF# R4713301 795.000 €

BEDS

3

BATHS

2

BUILT

150 m<sup>2</sup>

TERRACE

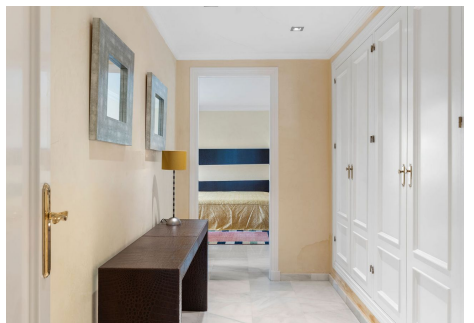
36 m<sup>2</sup>

Introducing this spacious three-bedroom corner apartment located in the sought-after development of Magna Marbella in Nueva Andalucía offering stunning sea, mountain & golf views from its west facing orientation. The accommodation comprises an entrance hall, fully equipped kitchen, spacious lounge & dining area, two guest bedrooms sharing a family bathroom and the master bedroom suite with its own sitting area. A special feature is the possibility to access the terrace from all bedrooms. This unit has an abundance of natural light and is spacious. The development itself is gated with 24-hour security, two communal pools and 1 underground parking space and storage room included in the price.



# IDILIQ

ESTATES





# IDILIQ

ESTATES

