



R4561033

📍 Manilva

REF# R4561033 425.000 €

BEDS

3

BATHS

2

BUILT

114 m²

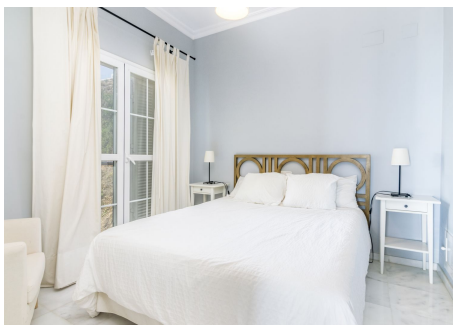
TERRACE

16 m²

Beautiful sea views penthouse in Manilva Fantastic 3-bedroom penthouse with impressive panoramic sea views next to the Port of Sotogrande and its prestigious golf courses. Located in a complex of only 24 luxury homes within the Urbanization "La Paloma de Manilva", just 300 meters from the beach. The house is distributed on one floor and has a spacious living room with direct access to a large terrace with open sea. It has an independent kitchen, 3 large bedrooms, one of them en suite and a bathroom. Includes a garage and storage room. It has large common areas, gardens, walkways, swimming pool, easy access to the garage. Located just two hundred meters from the sea, with the incredible advantage of being able to walk to a multitude of existing services in the area, such as restaurants, beach bars, supermarkets, pharmacies, shops, etc.

IDILIQ

ESTATES



IDILIQ

ESTATES

