

IDILIQ

ESTATES



R2139857

📍 Benalmadena Pueblo

REF# R2139857 3.000.000 €

BEDS

10

BATHS

10

BUILT

658 m²

PLOT

2780 m²

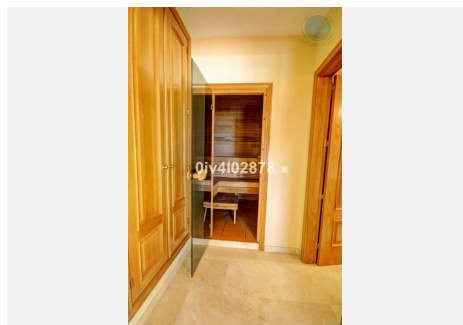
TERRACE

100 m²

Special opportunity to acquire a very large property with separate outbuildings and very generous grounds, all within close proximity to the charming Pueblo of Benalmádena. Fitted with champagne marble finish and underfloor heating, facilitated by solar panels. On entering the grounds of the villa, one can't help but notice the established gardens and trees along with the charming outdoor areas surrounded by lovely views to country and sea. On entering the main house on ground floor there is a hall, which leads to large lounge-diner (access to terrace), formal independent dining room (access to terrace), cloakroom, independent kitchen (access to large patio/utility area, tv room, 2 bedrooms (one en suite and both with access to terrace)). On upper floor, most bedrooms have access to main terrace. Very large main bedroom suite with lounge, shower/bathroom, walk in wardrobe area, and sauna. Three further bedrooms, all with en suite bathrooms. Outbuilding No1 : 3 bedroom independent house with 2 bathrooms, Outbuilding No2: independent 1 bed unit with bathroom. In addition there is an independent garage with storage room, a large swimming pool of 64m², with adjacent porche area of 31m². Further to this there are large grounds upon which there is probably sufficient space for a tennis court. Viewings are highly recommended!

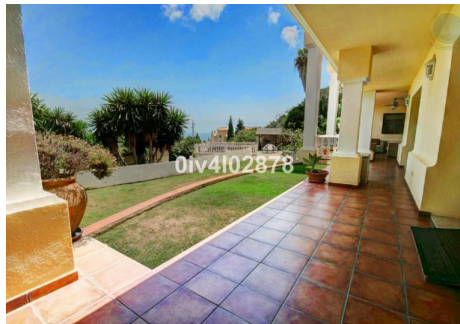
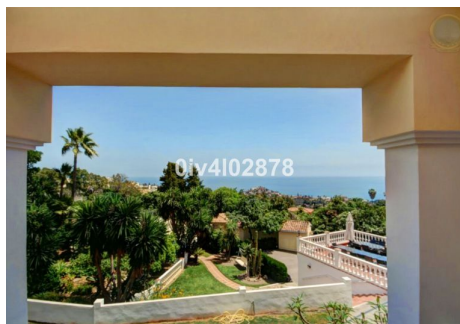
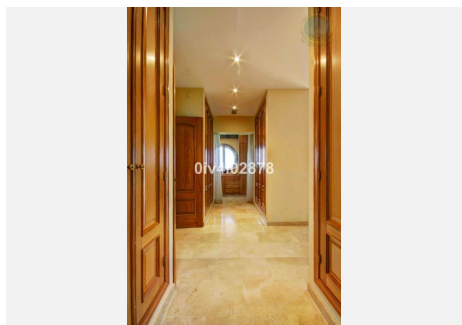
IDILIQ

ESTATES



IDILIQ

ESTATES



IDILIQ

ESTATES

