



R5122306

 Sotogrande

REF# R5122306 1.495.000 €

BEDS

5

BATHS

5

BUILT

338 m²

PLOT

500 m²

Situated within an exclusive gated enclave of the prestigious La Reserva Club, this striking villa delivers a rare combination of frontline golf views, sea vistas, and seamless indoor-outdoor living across three thoughtfully designed levels.

On the garden level, four spacious bedrooms open directly to the pool and landscaped grounds, creating a private retreat for family and guests. Elegant bathrooms with walk-in showers and refined finishes enhance the sense of comfort and style, while the connection to the poolside terrace makes this floor ideal for relaxed, resort-like living.

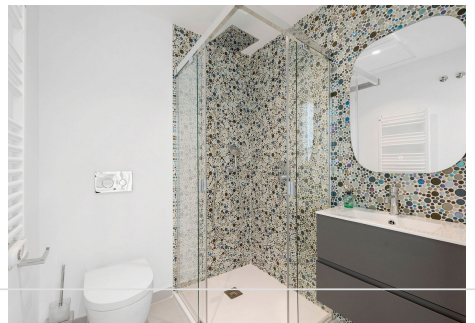
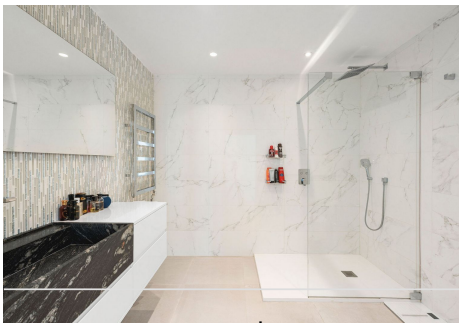
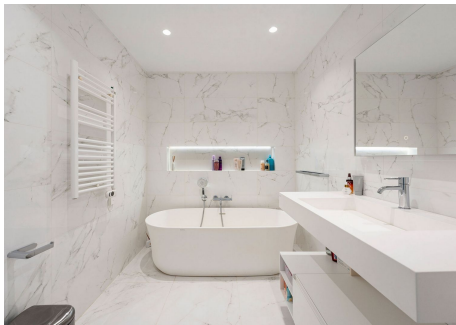
The middle floor is the home's centerpiece a dramatic, light-filled living and dining space framed by a wall of floor-to-ceiling glass that fully retracts, blurring the line between interior and exterior. Perfect for entertaining, this level also features a sleek, fully equipped designer kitchen, a powder room, and direct access to the covered garage for convenience.

IDILIQ

ESTATES

The top floor features a bright, spacious bedroom currently used as an office, a separate bathroom, and access to a vast rooftop terrace, an exceptional space for al fresco dining, lounging, or adding a private spa, all while enjoying sweeping golf and sea views.

Set within a secure, 24-hour gated community, residents also enjoy access to a gym, swimming pool, and two padel courts, with La Reserva's world-class golf and beach clubs just moments away. Nearby cafés, dining, and everyday essentials are easily accessible, offering luxury, privacy, and lifestyle in one of Sotogrande's most coveted addresses.



+34 951 123 083 | +44 (0)330 179 8687 | info@idiliqestates.com Local 28, Edificio D, Centro de Negocios Puerta de Banús, N-340, Km 175, 29660 Nueva Andlucia

IDILIQ

ESTATES

