

IDILIQ

ESTATES



R4950088

📍 Carib Playa

REF# R4950088 2.300.000 €

BEDS

10

BATHS

8

BUILT

630 m²

TERRACE

1400 m²

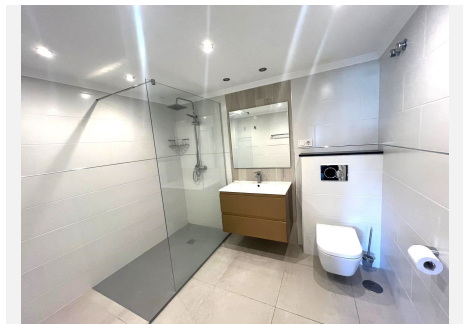
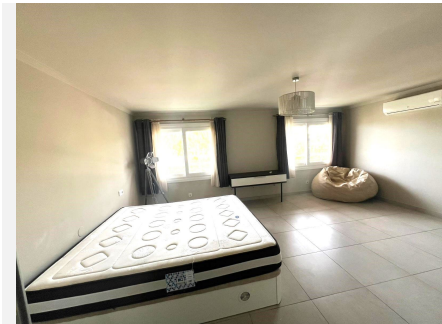
Investors dream A rare and unique opportunity to purchase as a package 2 triplex penthouses with panoramic sea views less than 300m from one of the best beaches on the coast, properties linked via the roof with a walkway and the icing on the cake is the current owners own the whole of the flat roof for the entire building, half for each penthouse with developers rights to build on/above to create more apartments. Each apartment has either room or has 5 bedrooms with the top floor opening out onto this vast roof area. one of which has a 16 person built jacuzzi Both apartments are in good condition, the first has a separate studio on the top floor, whilst the other has made the top floor into a chill out lounge and bar area. the real value to these properties are the ability to increase living accommodation/leisure areas on the roof subject to the local planning laws. Clearly stated in the deeds and on the note simple are developers rights which lasts until 2076. apartment 1 open plan lounge kitchen diner, toilet terrace downstairs 3 en suite bedrooms roof level independent studio roof terrace with irrigation total build approx 300sm total including terraces approx 700sm apartment 2 lounge diner. separate kitchen terrace downstairs 3 bed 3 bath steam room, small gym area top floor bar, lounge area, bathroom jacuzzi this can be converted into additional bedrooms approx build 330sm total inc terraces 730sm Penthouse Duplex, Carib Playa, Costa del Sol. 10 Bedrooms, 8 Bathrooms, Built 630 m², Terrace 1400 m². Setting : Beachside, Close To Sea. Orientation : South, South

+34 951 123 083 | +44 (0)330 179 8687 | info@idiliqestates.com Local 28, Edificio D, Centro de Negocios Puerta de Banús, N-340, Km 175, 29660 Nueva Andlucia

IDILIQ

ESTATES

West. Condition : Good. Pool : Communal. Climate Control : Air Conditioning. Views : Sea, Mountain, Country. Features : Covered Terrace, Lift, Fitted Wardrobes, Private Terrace, Guest Apartment, Storage Room, Utility Room, Ensuite Bathroom, Marble Flooring, Double Glazing. Furniture : Part Furnished. Kitchen : Fully Fitted. Garden : Communal. Parking : Garage. Utilities : Electricity. Category : Investment.



IDILIQ

ESTATES

