



R5433484

📍 Torrequebrada

REF# R5433484 470.000 €

BEDS

3

BATHS

3

BUILT

214 m<sup>2</sup>

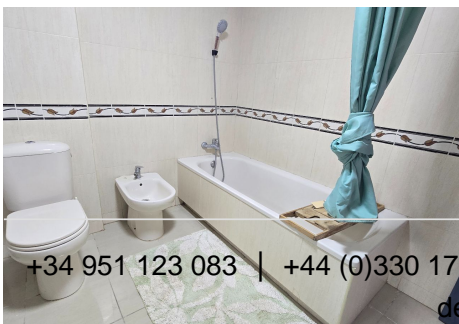
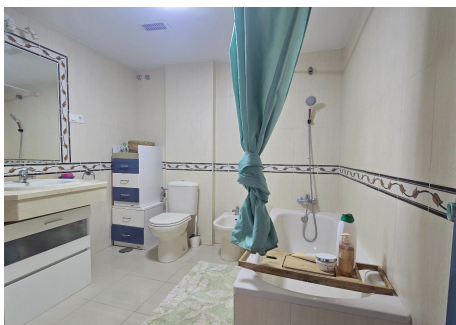
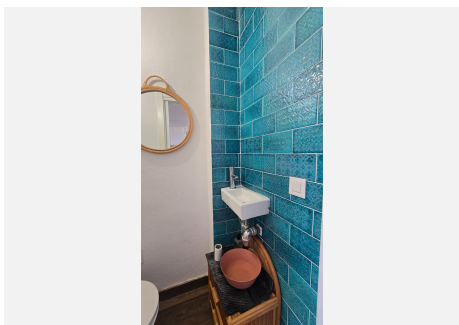
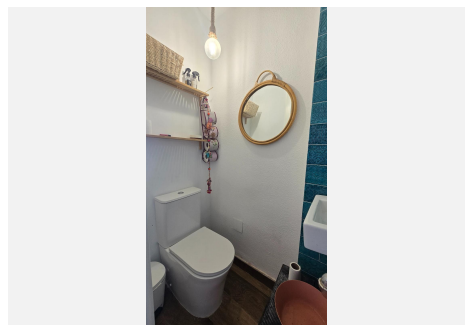
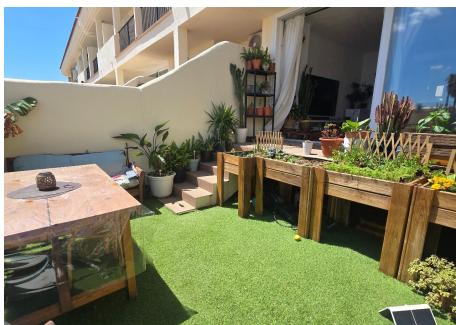
Renovated Townhouse with Sea Views in Benalmádena – Just a 5-Minute Walk from the Beach Experience the Mediterranean lifestyle in this beautifully renovated townhouse with stunning sea views, located in one of Benalmádena’s most sought-after areas. Just a 5-minute walk from the beach, this property combines a prime location, generous living space, and modern comfort. The home features 3 spacious bedrooms and 3 full bathrooms, offering an ideal layout for families, holiday living, or as a second residence. Recently renovated to a high standard, it boasts contemporary finishes, quality materials, and bright, welcoming interiors ready to move into. Enjoy beautiful sea views and abundant natural light throughout the day. The property is part of a well-maintained residential community with a communal swimming pool, perfect for making the most of the Costa del Sol’s year-round sunshine. The townhouse also includes 2 private parking spaces, a highly desirable feature, and is conveniently located close to supermarkets, restaurants, cafés, schools, public transport, golf courses, and leisure facilities. Málaga Airport and the city centre are just a short drive away. Whether you are looking for a permanent home, a holiday retreat, or a smart investment on the Costa del Sol, this property offers an exceptional opportunity. Key Features: \* Fully renovated townhouse \* Sea views \* 3 bedrooms \* 3 full bathrooms \* 2 private parking spaces \* Communal swimming pool \* 5-minute walk to the beach \* Close to all amenities \* Excellent transport links \*

+34 951 423 083 | +44 (0)330 179 8687 | info@idiliqestates.com Local 28, Edificio D, Centro de Negocios Puerta de Banús, N-340, Km 175, 29660 Nueva Andalucía

# IDILIQ

ESTATES

?Ideal as ?a ?permanent ?residence, ?holiday ?home, ?or ?investment



+34 951 123 083 | +44 (0)330 179 8687 | [info@idiliqestates.com](mailto:info@idiliqestates.com) Local 28, Edificio D, Centro de Negocios Puerta de Banús, N-340, Km 175, 29660 Nueva Andlucia

# IDILIQ

ESTATES

