

R5413648

📍 Benalmadena

REF# R5413648 390.000 €

BEDS

1

BATHS

1

BUILT

111 m²

Exclusive Sea View Apartment with Direct Beach Access in Benalmádena

Discover this exceptional property located in one of the most sought-after areas of Benalmádena, where comfort, sea views, and Mediterranean lifestyle come together in a privileged setting on the Costa del Sol.

With 111 m² built, the apartment offers a bright and functional layout, clearly separating the living and sleeping areas. The spacious living room opens directly onto a private terrace, perfect for enjoying panoramic sea views and the sunny climate all year round.

The fully equipped modern kitchen has been designed for both practicality and comfort. The bedrooms are bright and spacious, featuring fitted wardrobes and a layout ideal for permanent living or holiday rentals.

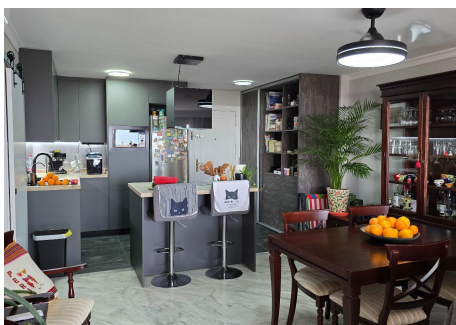
The gated community offers excellent amenities, including:

- * Communal swimming pool
- * Paddle tennis court
- * 24-hour security
- * Private parking
- * Storage room
- * Direct lift access to the beach

The location is unbeatable, just 100 meters from a beachfront chiringuito and close to shops, restaurants, services, and transport connections.

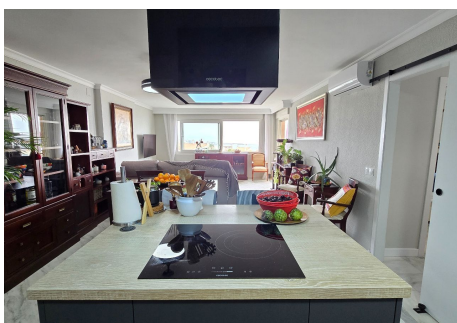
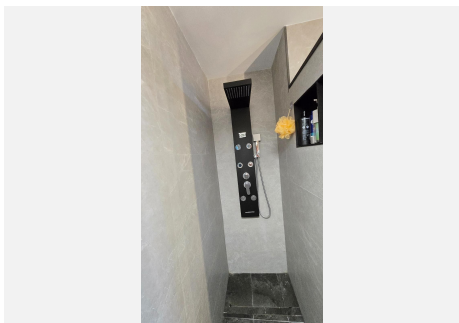
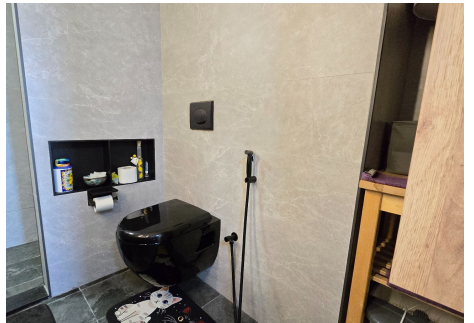
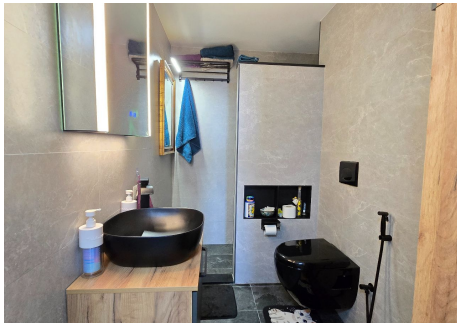
An ideal property for those seeking a home by the sea or investors looking for strong holiday rental potential in a consolidated area of the Costa del Sol.

A unique opportunity to enjoy Mediterranean living with comfort, exclusivity, and long-term value.



IDILIQ

ESTATES



IDILIQ

ESTATES

