

## GROUND FLOOR APARTMENT 4 BEDROOMS 2 BATHROOMS IN GUADALMINA BAJA

 Guadalmina Baja

REF# R4686304 1.055.000 €

BEDS

4

BATHS

2

BUILT

140 m<sup>2</sup>

PLOT

93 m<sup>2</sup>

TERRACE

68 m<sup>2</sup>

Exceptional ground floor apartment with garden in the best urbanization of Guadalmina Baja, with direct access to the quiet beach of Linda Vista. Unique opportunity as it is one of the only urbanizations with direct access to the beach, in an exclusive residential area, with all services, restaurants, paddle tennis courts, etc.

The apartment has a large living room with large open kitchen, master bedroom with full bathroom en suite, two bedrooms, guest bathroom and a large garden with irrigation (maintenance carried out by the gardeners of the community) and terrace.

The house is equipped with underfloor heating in all rooms, hot water and a very nice fireplace, and all the necessary appliances to move into.

Possibility of storage room and garage, not included, and with price to be negotiated.

The urbanization has huge gardens and swimming pool, as well as direct access to the Guadalmina golf course, paddle tennis courts and the sea.

# IDILIQ

## ESTATES

parking and storage can also be purchased at an additional price  
Ground Floor Apartment, Guadalmina Baja, Costa del Sol.  
4 Bedrooms, 4 Bathrooms, Built 198 m².

Setting : Beachfront, Beachside, Close To Sea, Urbanisation, Front Line Beach Complex.

Orientation : South West.

Condition : Good.

Pool : Communal.

Climate Control : Air Conditioning.

Views : Garden.

Features : Covered Terrace, Lift, Fitted Wardrobes, Private Terrace, Ensuite Bathroom.

Furniture : Part Furnished.

Kitchen : Fully Fitted.

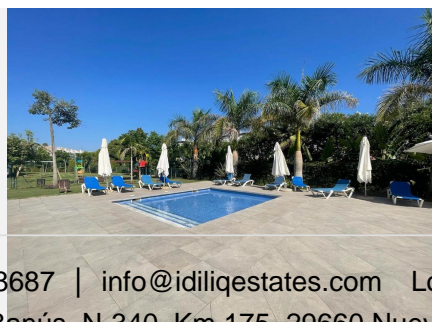
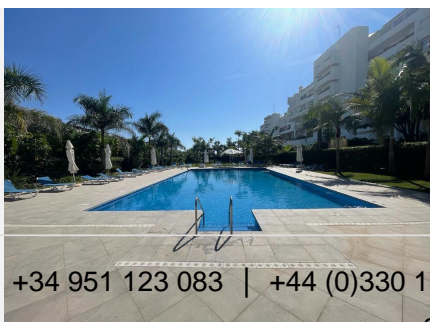
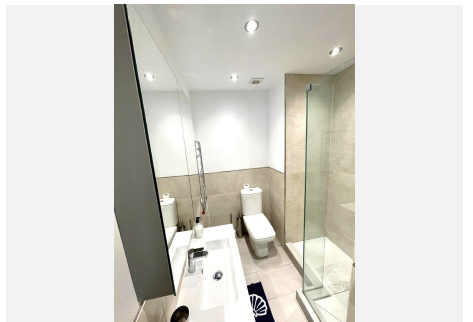
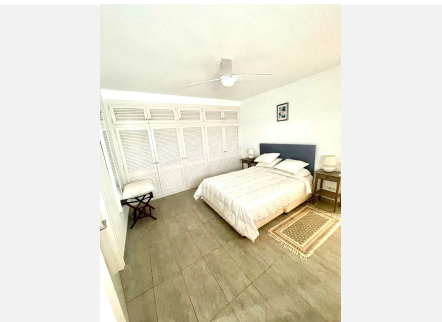
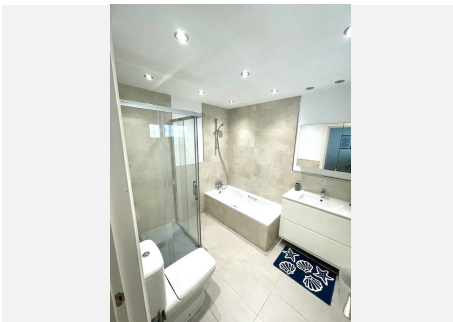
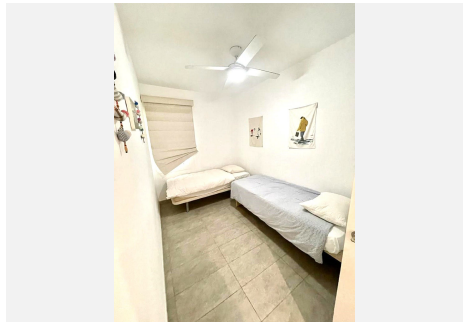
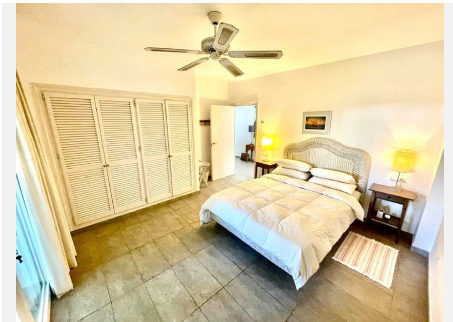
Garden : Communal.

Security : Gated Complex.

Parking : Underground.

Utilities : Electricity.

Category : Beachfront, Holiday Homes, Investment.



+34 951 123 083 | +44 (0)330 179 8687 | [info@idiliqestates.com](mailto:info@idiliqestates.com) Local 28, Edificio D, Centro de Negocios Puerta de Banús, N-340, Km 175, 29660 Nueva Andlucia