



R5216716

📍 Manilva

REF# R5216716 1.395.000 €

BEDS

4

BATHS

4.5

BUILT

534 m²

PLOT

852 m²

TERRACE

107 m²

Step through the grand wooden doors into this stunning villa in La Paloma, perfectly positioned between the ports of Sotogrande and La Duquesa. Designed for relaxed Mediterranean living, this home combines elegance, comfort, and breathtaking sea views.

The entrance opens into a bright open-plan space with the living, dining and kitchen areas seamlessly connected. To your left, an open-plan kitchen flows into the dining area, while directly ahead, the living room features a charming fireplace and expansive glass doors framing the sparkling Mediterranean Sea. Both the living and dining areas open onto a spacious terrace, ideal for al fresco dining or lounging outdoors while enjoying the view.

On the ground floor, you'll find two generous ensuite bedrooms, as well as a convenient guest toilet. One of the bedrooms offers direct access to the terrace, which leads down to the beautifully landscaped garden and the large private pool of 51.57 m².

IDILIQ

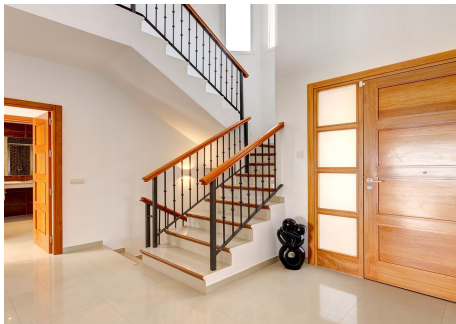
ESTATES

Upstairs are two additional double bedrooms, both ensuite and each with access to a private terrace boasting serene, panoramic sea views. The master bedroom also includes a stylish walk-in wardrobe for added comfort and convenience.

The lower level of the villa offers endless potential. It includes a large garage for 2–3 cars, a second lounge area, laundry room and storage. This versatile space can easily be transformed into a games room, home cinema, gym, or office.

Set on an 852.21 m² plot, this villa epitomizes Spanish coastal living, spacious, bright and perfectly located. The beach is just a 10-minute walk away, Sotogrande Marina is a 5-minute drive, La Duquesa Port is equally close, Gibraltar is just 20 minutes away, and Malaga Airport under an hour.

Come view with me and experience this Mediterranean dream home!



IDILIQ

ESTATES



IDILIQ

ESTATES

