



R5152150

📍 Manilva

REF# R5152150 425.000 €

BEDS

4

BATHS

3.5

BUILT

119 m²

PLOT

129 m²

TERRACE

39 m²

This exceptional townhouse is located in a sought-after frontline beach complex, offering the perfect blend of coastal living and modern convenience.

As you enter, the kitchen is positioned to the right, complete with a separate laundry and storage room. To the left, you'll find a guest toilet, followed by a staircase leading to the upper floors. Continuing straight through the hallway, the spacious living and dining area opens onto a generous terrace, which enjoys sunlight all year round. The outdoor space is thoughtfully designed, with a covered section for dining and an open area to bask in the Spanish sun. From here, you can take in glimpses of the sea and beach, adding to the charm of this seaside home.

A rare and highly desirable feature of this property is its private entrance to an underground garage, providing space for two cars and a large storage room—an invaluable asset in a beachfront location.

Ascending to the first floor, you'll find three well-proportioned bedrooms, all with fitted wardrobes. The master suite enjoys its own en-suite bathroom and a private balcony with beautiful sea views. The two

+34 951 123 083 | +44 (0)330 179 8687 | info@idiliqestates.com Local 28, Edificio D, Centro de Negocios Puerta de Banús, N-340, Km 175, 29660 Nueva Andlucia

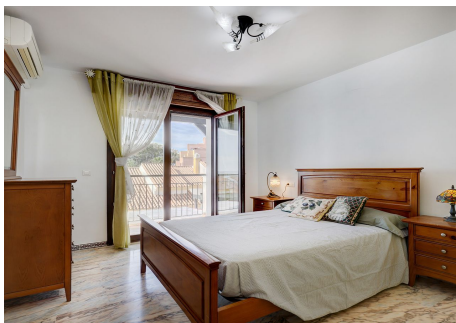
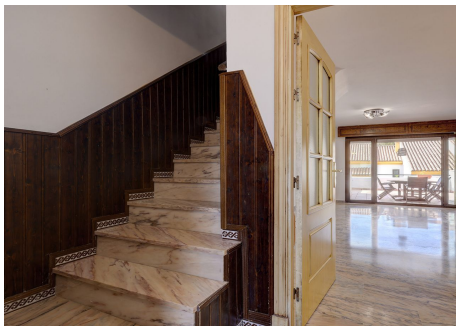
additional bedrooms—one double and one single—share a bathroom on this level. To make the most of the fresh sea breeze, all bedrooms are fitted with mosquito nets.

The second floor features a unique attic-style fourth bedroom with a slanted roof, offering plenty of character. This room benefits from access to a spacious private roof terrace, perfect for relaxing in the sun or enjoying panoramic views.

The property also benefits from solar-powered hot water and air conditioning throughout.

A rare opportunity to own a spacious beachfront home with private parking, stunning outdoor spaces, and the charm of Mediterranean living.

Come View With Me!



IDILIQ

ESTATES



IDILIQ

ESTATES

