

IDILIQ

ESTATES



R4765537

📍 La Duquesa

REF# R4765537 675.000 €

BEDS

3

BATHS

2

BUILT

162 m²

PLOT

10100 m²

TERRACE

34 m²

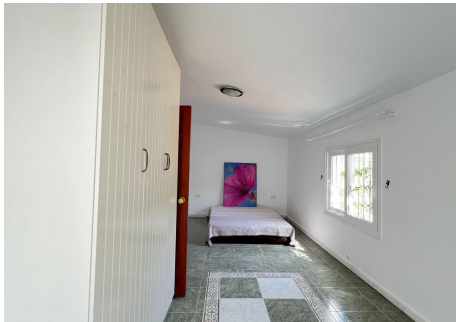
A charming Finca located in Los Hidalgos. A lovely house nestled within rolling hills with spectacular country views, with the grounds leading all the way to the river. Whilst in the heart of nature, it is unbelievable to think you are just a couple of minutes drive away from the coast, the shops, restaurants, and Marina of Duquesa. A secret haven. The Finca has four different plots which equate to approximately 10,000 m² of land. The main plot has a bungalow with private garden and swimming pool, The surrounding plots include a paddock for horses and stables - a perfect home for someone looking to keep horses and animals. There is a lovely long driveway leading to the Finca. The main house is south-west facing - it is in good condition with high ceilings and good quality pvc windows. You enter through a covered porch. The main door leads to a living room that has a fabulous beamed high ceiling and a lovely wood burning stove. From here, you can go up a few stairs to a dining room with a Cathedral vaulted ceiling. The kitchen is fully fitted and also has a high vaulted ceiling. The kitchen is a separate room but can easily be made open-plan to the dining room for those who may prefer an integrated living environment. The house has two wings. The first wing has a guest toilet and shower room which can be accessed from the main dining room and from a bedroom. The bedroom has built in wardrobes and direct access through glass balcony doors to the front porch with its views. The other wing from the living room has a big double bedroom that has access to the front porch, an

+34 951 123 083 | +44 (0)330 179 8687 | info@idiliqestates.com Local 28, Edificio D, Centro de Negocios Puerta de Banús, N-340, Km 175, 29660 Nueva Andlucia

IDILIQ

ESTATES

ensuite bathroom and fitted wardrobes. There is another bedroom in this wing with glass doors and access to the back garden. Walking out of the main house, you walk down to a large terrace which then leads down to your private pool and garden that goes all the way to the river. To the right, you have the paddock and stables. The main house and its plot is all fenced in. The house has its own well. The grounds are stunning, with mature trees and gardens. A truly special property. Come view with me!



IDILIQ

ESTATES



IDILIQ

ESTATES

