



R4944316

📍 Benalmadena

REF# R4944316 1.100.000 €

BEDS

3

BATHS

3

BUILT

194 m²

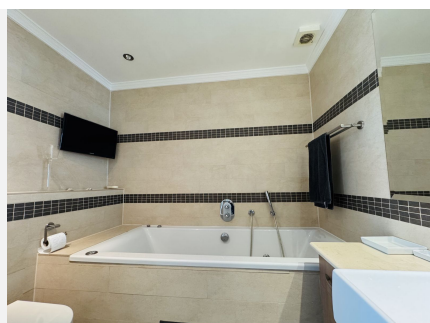
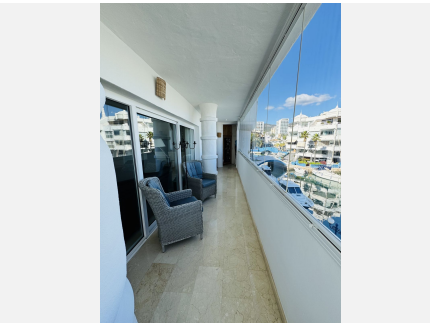
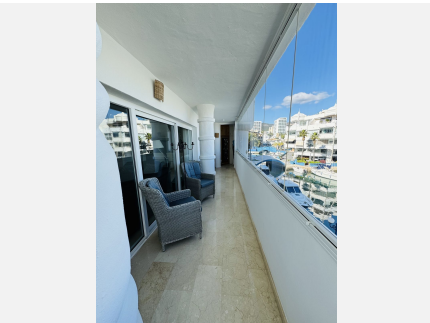
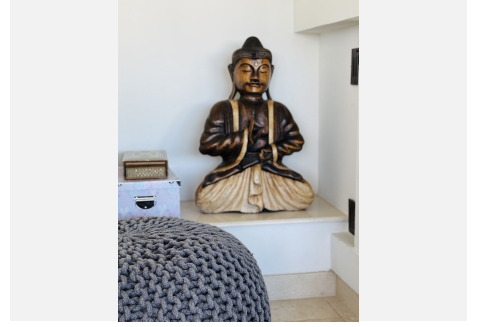
TERRACE

37 m²

"Discover paradise in Puerto Marina, Benalmádena! This stunning 231m² apartment offers you a unique experience with 180-degree panoramic views of the sea and the port from its spacious terrace. The modern kitchen is fully equipped, ideal for food lovers. The elegant and tastefully decorated living-dining room is perfect for relaxing and enjoying unforgettable moments. The master bedroom features a dressing room and ensuite bathroom, while the other two bedrooms offer sea views and built-in wardrobes. The bathrooms are equipped with a shower and bathtub for your comfort. In addition, the apartment includes a storage room, parking space and access to a communal pool. Built in 1990, this well-maintained apartment is located on the 1st floor of a building with an elevator. Facing east, with hot/cold pump heating and air conditioning, it guarantees comfort all year round. Puerto Marina, awarded the Blue Flag for Clean Seas in Europe, is the ideal place to enjoy coastal life. Don't miss this unique opportunity!"

IDILIQ

ESTATES



IDILIQ

ESTATES

