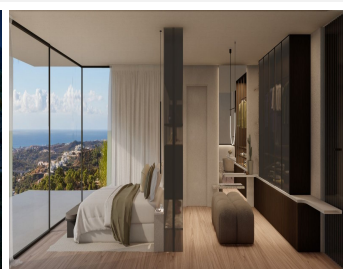
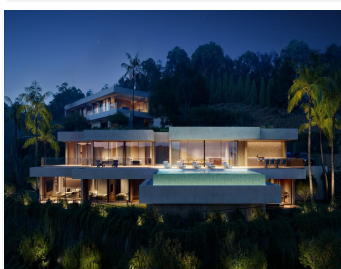


IDILIQ

ESTATES



R4938850

📍 Benahavís

REF# R4938850 4.985.000 €

BEDS

6

BATHS

8

BUILT

1179 m²

PLOT

2395 m²

TERRACE

248 m²

Detached Villa, Benahavís, Costa del Sol. 6 Bedrooms, 8 Bathrooms, Built 1179 m², Terrace 248 m², Garden/Plot 2395 m². Setting : Close To Golf, Close To Forest, Urbanisation. Orientation : South West. Condition : New Construction. Pool : Private, Heated. Climate Control : Air Conditioning, Pre Installed A/C, Hot A/C, Cold A/C, Central Heating, Fireplace, U/F Heating, U/F/H Bathrooms. Views : Sea, Mountain, Panoramic. Features : Covered Terrace, Lift, Fitted Wardrobes, Private Terrace, Satellite TV, WiFi, Gym, Sauna, Games Room, Guest House, Storage Room, Utility Room, Ensuite Bathroom, Wood Flooring, Barbeque, Double Glazing, Domotics, 24 Hour Reception, Staff Accommodation, Basement, Fiber Optic. Furniture : Optional. Kitchen : Fully Fitted. Garden : Private, Landscaped, Easy Maintenance. Security : Gated Complex, Entry Phone, Alarm System, 24 Hour Security, Safe. Parking : Covered, More Than One, Private. Utilities : Electricity, Drinkable Water, Telephone. Category : Cheap, Luxury, With Planning Permission, Contemporary.

IDILIQ

ESTATES

