



R5108869

📍 Marbella

REF# R5108869 650.000 €

BEDS

3

BATHS

2

BUILT

114 m²

TERRACE

65 m²

Located in the well-established and sought-after residential area of San Pedro Alcántara, Marbella, this stylish duplex penthouse is just 700 metres from the beach, within a well-maintained gated community with a communal swimming pool and easy access to all essential amenities: supermarkets, restaurants, green areas, pharmacies, and public transport.

The property is in good general condition, fully habitable and ready to move into, offering a smart layout and generous outdoor spaces that make the most of the Mediterranean lifestyle all year round.

Main features:

3 bedrooms with built-in wardrobes

2 full bathrooms (one en suite)

Bright living-dining area with direct access to a 207m² main terrace

Contemporary design with a kitchen visually connected to the dining area through a practical sliding glass enclosure

+34 951 123 083 | +44 (0)330 179 8687 | info@idiliqestates.com Local 28, Edificio D, Centro de Negocios Puerta de Banús, N-340, Km 175, 29660 Nueva Andalucía

Independent laundry area

Outdoor areas designed for enjoyment:

Staircase from the main terrace leading to a large 65.75m² private rooftop solarium

Pergola on the upper level, ideal for creating a chill-out zone, outdoor dining area or sunbathing space

Communal pool within a quiet and secure development

Private underground parking space included in the price

Installations and equipment:

Central air conditioning with heat pump

Electric water heater

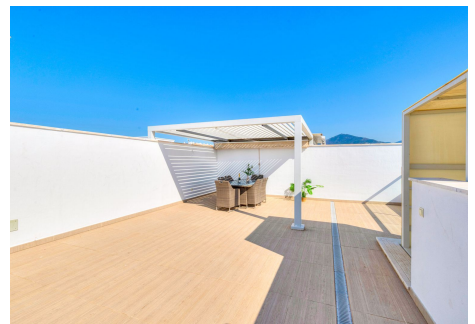
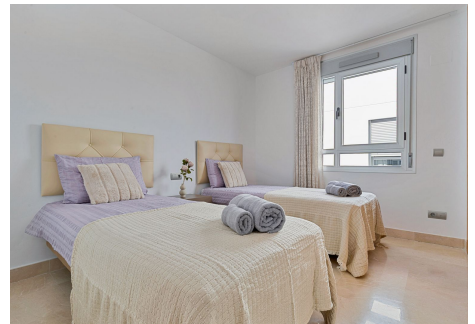
Well-maintained interior and exterior finishes

Low-density community with excellent upkeep

An ideal home whether as a primary residence, holiday retreat, or investment property with strong rental potential, in one of the most comfortable and well-connected areas of Marbella. With easy access to the A-7 motorway and just minutes from San Pedro town centre, the beachfront promenade, and the renowned Puerto Banús.

The Abbreviated Information Document is at your disposal.

Costs: Taxes (ITP or VAT + AJD) + notary and land registry fees. The price does not include VAT.



IDILIQ

ESTATES

