

# IDILIQ

ESTATES



R4882276

📍 Atalaya

REF# R4882276 220.000 €

BEDS

2

BATHS

2

BUILT

101 m<sup>2</sup>

We present this cozy family semi-detached house, located in Monte Biarritz, Atalaya, with an excellent location between Estepona and San Pedro, close to schools, shops, beaches and golf courses.

The house is distributed over two floors. On the ground floor, it has a spacious living-dining room with kitchen, a bathroom and a passage area. On the upper floor, you will find two bedrooms, a toilet and a charming covered terrace, which is accessed by an elegant internal staircase.

Urbanization with green areas and swimming pool.

With its strategic location and functional design, this house is ideal to enjoy with the family.

Don't miss this opportunity and come visit it!

Townhouse, Atalaya, Costa del Sol.

2 Bedrooms, 2 Bathrooms, Built 101 m<sup>2</sup>.

+34 951 123 083 | +44 (0)330 179 8687 | [info@idiliqestates.com](mailto:info@idiliqestates.com) Local 28, Edificio D, Centro de Negocios Puerta de Banús, N-340, Km 175, 29660 Nueva Andlucia

# IDILIQ

ESTATES

Setting : Close To Golf, Close To Sea, Close To Town, Urbanisation.

Orientation : South.

Condition : Good.

Pool : Communal.

Views : Panoramic.

Features : Covered Terrace, Private Terrace.

Furniture : Not Furnished.

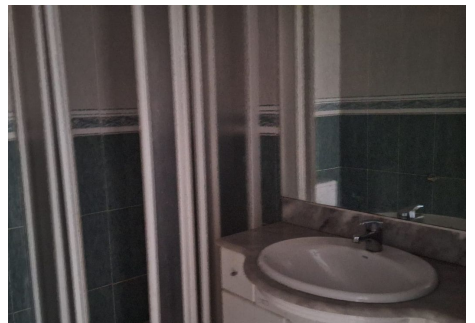
Kitchen : Partially Fitted.

Garden : Communal.

Security : Gated Complex, Entry Phone.

Utilities : Electricity, Drinkable Water, Telephone.

Category : Bargain, Beachfront, Cheap, Distressed, Golf, Holiday Homes, Investment, Luxury.



# IDILIQ

ESTATES

