

IDILIQ

ESTATES



R4662286

 Benahavís

REF# R4662286 219.000 €

BEDS

1

BATHS

1

BUILT

71 m²

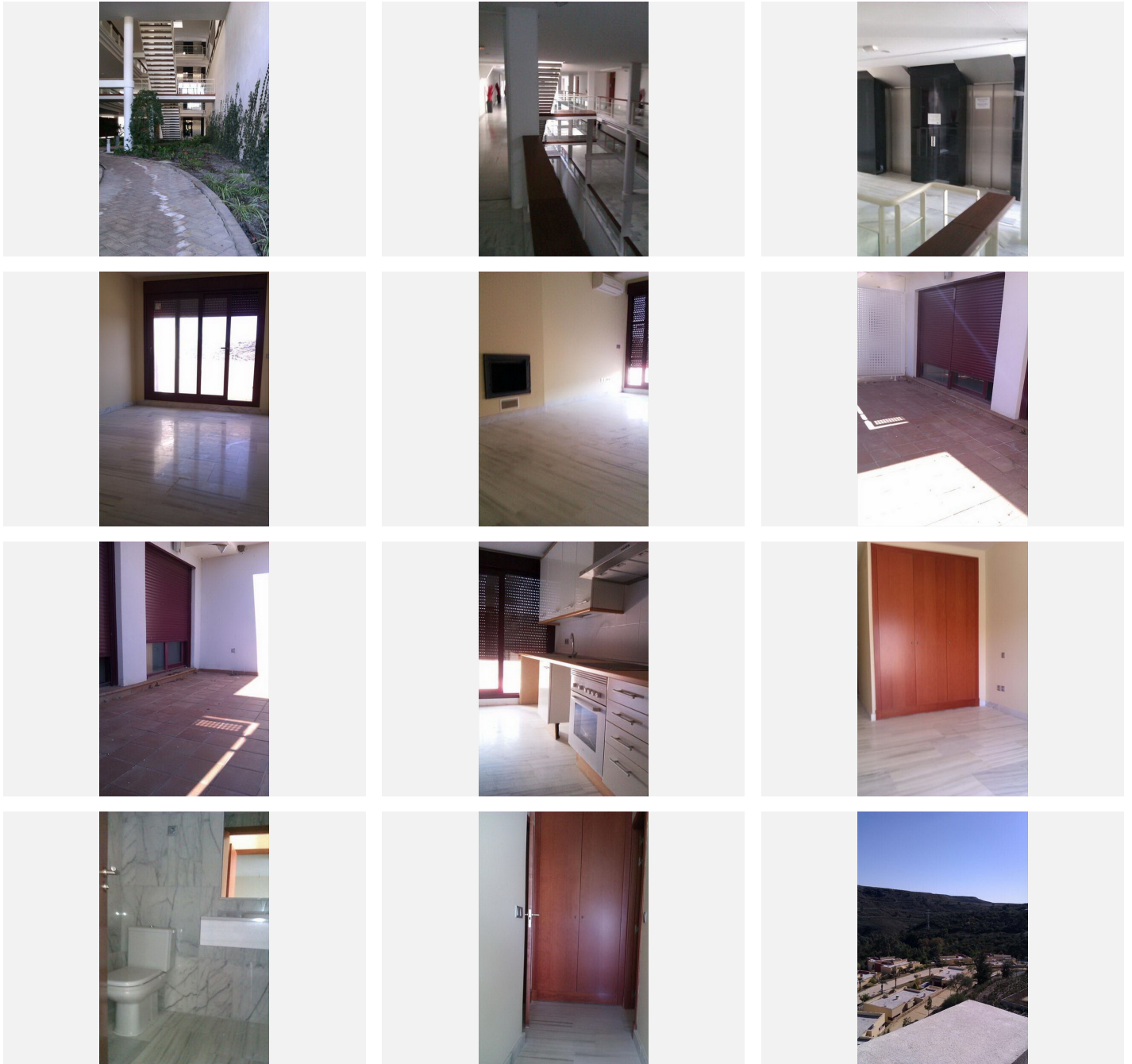
Apartment in Urb. Parque Botánico, Benahavís, Málaga! This stunning 71 m² apartment provides you with an unparalleled living experience in one of the most prestigious locations in Benahavís, Málaga. The property offers impeccable design and panoramic views of the sea and mountains from its cozy terrace. Key Features: Living-dining room with a fireplace, creating a warm and inviting atmosphere to enjoy with family and friends. Furnished kitchen equipped with high-quality appliances and a functional design. Bright bedroom, offering a quiet space to rest and relax. Elegant and functional bathroom designed with quality finishes. Impressive Views: The spacious terrace offers spectacular views of both the sea and the majestic mountains, creating a perfect environment to enjoy unforgettable sunsets. Exceptional Amenities: The urbanization features ample communal areas and a communal pool, ideal for cooling off and relaxing on warm summer days. Prime Location: Located in a quiet area surrounded by residential properties with similar features, this apartment offers a serene and pleasant environment. Additionally, it has easy access to the road and other key communication points, as well as proximity to establishments and shops in the area. This is a unique opportunity to acquire a dream property in one of the most exclusive enclaves in Benahavís. Don't miss the chance to make this apartment your new home! Contact us today to schedule a visit. Middle Floor Apartment, Benahavís, Costa del Sol. 1 Bedroom, 1 Bathroom, Built 71 m². Setting :

+34 951 123 083 | +44 (0)330 179 8687 | info@idiliqestates.com Local 28, Edificio D, Centro de Negocios Puerta de Banús, N-340, Km 175, 29660 Nueva Andalucía

IDILIQ

ESTATES

Commercial Area, Close To Shops, Close To Schools, Close To Forest, Urbanisation. Orientation : South. Condition : Good. Pool : Communal. Climate Control : Air Conditioning, Fireplace. Views : Mountain, Country, Panoramic. Features : Covered Terrace, Lift, Fitted Wardrobes, Private Terrace. Kitchen : Partially Fitted. Garden : Communal. Security : Gated Complex, Entry Phone. Parking : Underground. Utilities : Electricity, Drinkable Water, Telephone. Category : Bargain, Beachfront, Cheap, Distressed, Golf, Holiday Homes, Investment, Luxury.



IDILIQ

ESTATES

