



R4829272

📍 La Duquesa

REF# R4829272 349.500 €

BEDS

3

BATHS

2

BUILT

257 m²

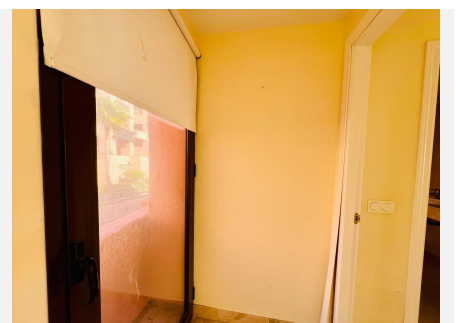
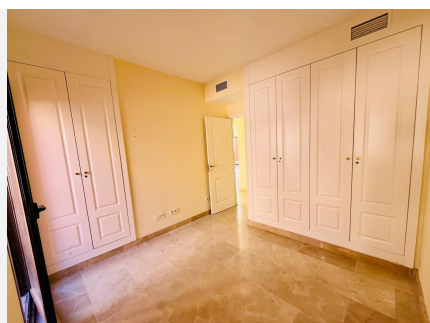
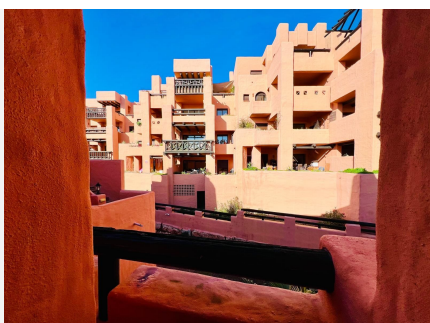
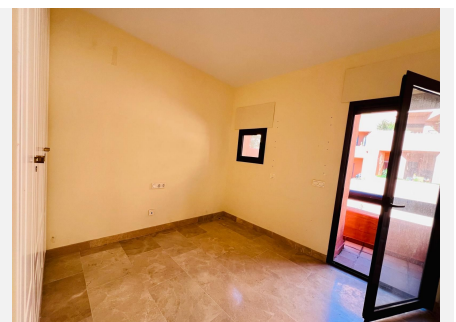
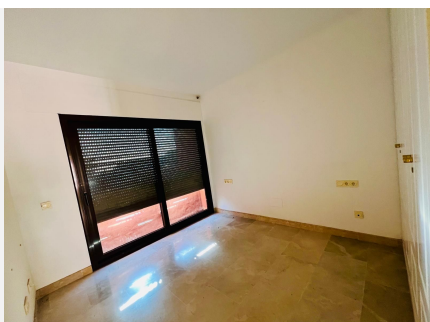
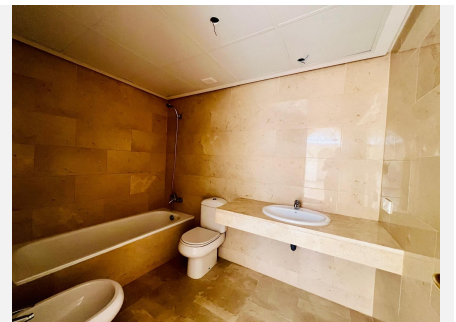
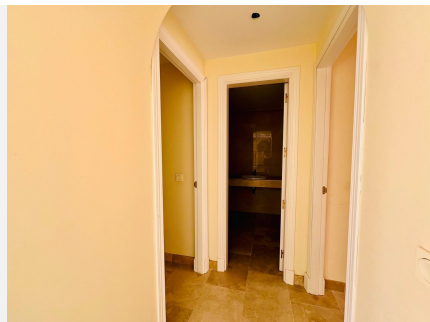
Discover excellence in this exclusive apartment located in Manilva, Málaga. With 114 m² of space, this residence has been meticulously designed to offer a luxurious and comfortable home. The apartment features 2 bedrooms, both with built-in wardrobes, and 2 bathrooms, the main one being a true oasis with a hydro-massage bathtub perfect for your relaxation. The fully furnished kitchen stands out for its elegance and functionality, equipped with a granite countertop and high-end appliances such as an electric water heater, ceramic hob, oven, fridge-freezer, dishwasher, and washing machine. The living-dining room, the heart of the home, opens onto a terrace with stunning views of the gardens or the sea. High-quality materials and warm, welcoming finishes make this apartment a unique place. Additionally, the property includes a parking space and a storage room, providing extra convenience. The Coto del Real residential complex offers an exclusive lifestyle with an intercom system, elevator, extensive garden areas, paddle tennis court, concierge service, and 8 communal pools. Located on the Manilva coast, in Arroyo de la Peñuela, just 2 km from the town center, you'll have quick access to all essential services. Shops, supermarkets, educational, sports, and health facilities are at your disposal. You'll also enjoy close proximity to the golf course, marina, and La Duquesa beach, as well as the A-7 and San Luis de Sabinillas. Don't miss the chance to live in this luxurious enclave on the Costa del Sol Don't miss the opportunity to live in

+34 951 123 083 | +44 (0)330 179 8687 | info@idiliqestates.com Local 28, Edificio D, Centro de Negocios Puerta de Banús, N-340, Km 175, 29660 Nueva Andlucia

IDILIQ

ESTATES

this luxury enclave on the Costa del Sol! Middle Floor Apartment, La Duquesa, Costa del Sol. 2 Bedrooms, 1 Bathroom, Built 114 m². Setting : Close To Golf, Close To Sea, Urbanisation. Orientation : South. Condition : Good. Pool : Communal. Climate Control : Air Conditioning. Views : Sea, Mountain, Panoramic, Garden, Pool. Features : Covered Terrace, Lift, Paddle Tennis, Storage Room. Furniture : Not Furnished. Kitchen : Partially Fitted. Garden : Communal. Security : Gated Complex. Parking : Underground. Category : Bargain, Beachfront, Cheap, Distressed, Holiday Homes, Investment, Luxury, Repossession.



IDILIQ

ESTATES

