



R4608460

 Nueva Andalucía

REF# R4608460 475.000 €

BEDS

3

BATHS

3

BUILT

208 m²

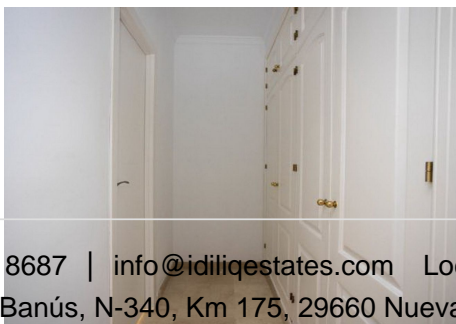
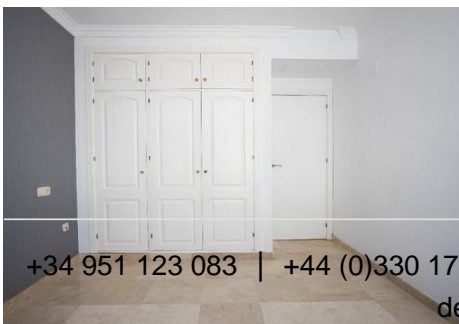
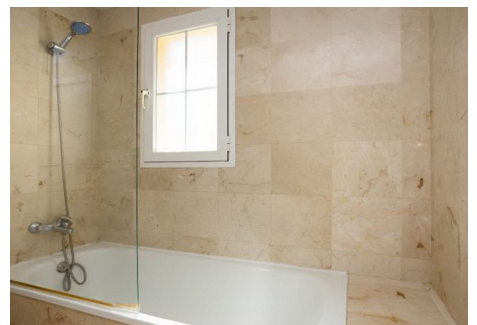
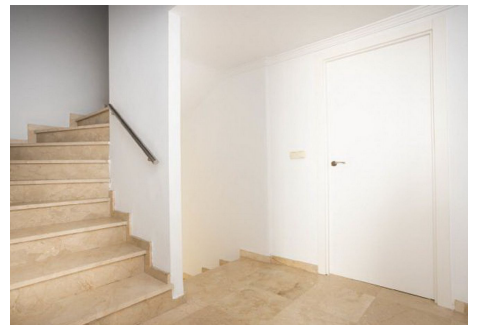
This is a unique opportunity to acquire an exceptional property in the sought-after area of Nueva Andalucía, Marbella. This charming semi-detached house, with an area of 208 m² spread over 4 floors, offers elegant design and luxury amenities. The interior distribution includes a spacious living-dining room, a fully furnished kitchen, 3 bedrooms with built-in wardrobes and 3 bathrooms, providing spaciousness and privacy. The marble floor adds a touch of elegance, while the fireplace in the living room creates a cozy atmosphere. The jewel of the property is the terrace-solarium, perfect for enjoying the panoramic views. Outside, the house has a large garden at the back, providing an oasis of tranquility. In addition, it has a generous garage in the basement for greater convenience. Located in a quiet residential area, next to the prestigious Aloha Golf Club and a few minutes from the beach, this semi-detached house combines the serenity of the environment with proximity to quality services. Don't miss this opportunity to live in style in Marbella! Contact us for more information and to schedule a visit. Townhouse, Nueva Andalucía, Costa del Sol. 3 Bedrooms, 3 Bathrooms, Built 208 m². Setting : Frontline Golf, Close To Town. Orientation : South. Condition : Good. Pool : Communal. Climate Control : Air Conditioning, Fireplace. Views : Golf. Features : Fitted Wardrobes, Private Terrace, Solarium, Marble Flooring, Basement. Furniture : Not Furnished. Kitchen : Partially Fitted. Garden : Private. Parking : Underground, Garage. Utilities : Electricity, Drinkable Water, Telephone.

+34 951 123 083 | +44 (0)330 179 8687 | info@idiliqestates.com Local 28, Edificio D, Centro de Negocios Puerta de Banús, N-340, Km 175, 29660 Nueva Andalucía

IDILIQ

ESTATES

Category : Bargain, Distressed, Golf, Investment, Luxury, Repossession.



+34 951 123 083 | +44 (0)330 179 8687 | info@idiliqestates.com Local 28, Edificio D, Centro de Negocios Puerta de Banús, N-340, Km 175, 29660 Nueva Andalucía