



R5361913

📍 Calahonda

REF# R5361913 399.000 €

BEDS

3

BATHS

2

BUILT

69 m²

TERRACE

10 m²

Three-bedroom, two-bathroom apartment located next to the beach, on the second line, with stunning sea views.

The apartment has been completely renovated to a high standard: electrical system, plumbing, air conditioning, kitchen, flooring, windows, and bathrooms. Everything is brand new and finished with excellent quality materials.

Spacious living-dining room with sea views, featuring large windows that allow plenty of natural light and offer panoramic views of the sea. Direct access from the living room to a small south-facing terrace, ideal for enjoying the sun and beautiful sunsets.

Large, modern, independent designer kitchen, fully furnished with appliances, offering excellent ventilation and natural light.

The master bedroom also enjoys sea views and includes an en-suite bathroom.

+34 951 123 083 | +44 (0)330 179 8687 | info@idiliqestates.com Local 28, Edificio D, Centro de Negocios Puerta de Banús, N-340, Km 175, 29660 Nueva Andlucia

IDILIQ

ESTATES

From the kitchen, through a hallway, you access two additional bedrooms, both with closets, air conditioning, and windows overlooking the landscaped communal areas. In this area, there is another fully equipped bathroom.

The building has an elevator serving every floor, and the development offers a large communal swimming pool located right in front of the sea.

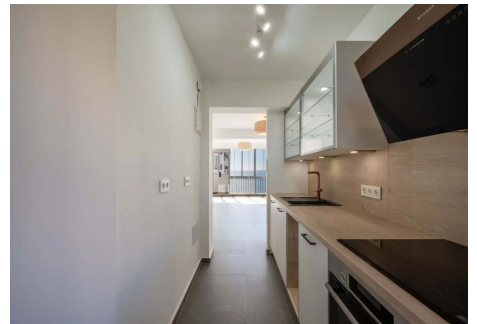
Prime location, next to numerous restaurants and beach bars, close to a bus stop, and just a short walk from all local amenities and shopping centers.

An ideal apartment for winter rentals or as a permanent residence, as the community does not allow weekly or short-term tourist rentals.



IDILIQ

ESTATES



IDILIQ

ESTATES

