

IDILIQ

ESTATES



R4409695

 The Golden Mile

REF# R4409695 2.300.000 €

BEDS

4

BATHS

5

BUILT

265 m²

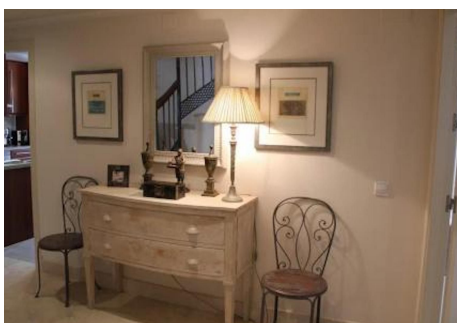
TERRACE

145 m²

Luxury south facing, sea view 4 bed duplex penthouse in a prime location. Among the features are air conditioning (cold/hot), under floor heating throughout, marble floors, a fully equipped kitchen and a wonderful fireplace. Also there is an intercom and alarm system. This exceptional penthouse benefits from a jacuzzi and 2 private subterranean parking spaces as well as a storage room. With a privileged location: Located opposite La Meridiana restaurant, in the heart of the Golden Mile, direct exit to the Marbella ring road (exit 181 B of the A7 Nagüeles), next to the Puente Romano. Only 900 metres from the beach. Three minutes from Puerto Banús and five minutes from Marbella and ten minutes from 8 golf courses. And with a school bus stop very close with connections to all the schools in Marbella and surrounding areas. Close to the rest of the world. Having direct access to the motorway means that Malaga International Airport is only 40 minutes away. All this makes "Lomas de Rey" a privileged place to live and relax.

IDILIQ

ESTATES



IDILIQ

ESTATES

