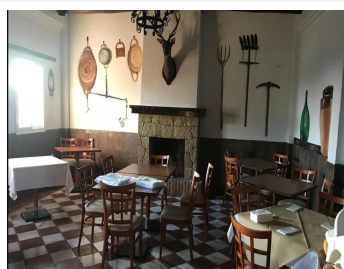


IDILIQ

ESTATES



R4893439

 Selwo

REF# R4893439 2.000.000 €

BEDS

1

BATHS

5

BUILT

535 m²

PLOT

3300150 m²

TERRACE

150 m²

Charming restaurant, with large terraces and outdoor areas, spectacular sea views, unbeatable access, in an environment connected to all facilities, beaches, supermarkets, surrounded by the best known developments, in the middle of the new Golden Mile, with a total of 530 built m2, fully equipped and furnished, It has a total of 4 living rooms, 1 covered terrace, 1 Andalusian patio, 1 room for office. On the second level, has an apartment with a bedroom, bathroom, living room, kitchen. Ideal for wedding celebrations, birthdays, business meals ,,,, Plot of 3300 meters, with large capacity for parking. Perfectly connected, in an area of continuous passage and with great visibility. Call now to arrange your appointment.



+34 951 123 083 | +34 (0)330 179 8687 | info@idiliqestates.com Local 28, Edificio D, Centro de Negocios Puerta de Banús, N-340, Km 175, 29660 Nueva Andlucia