



R4901350

📍 Benahavís

REF# R4901350 6.066.000 €

BEDS

5

BATHS

6

BUILT

580 m²

PLOT

1211 m²

TERRACE

70 m²

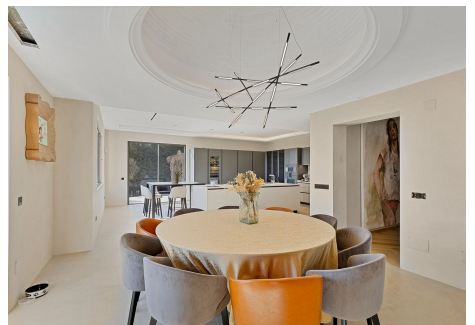
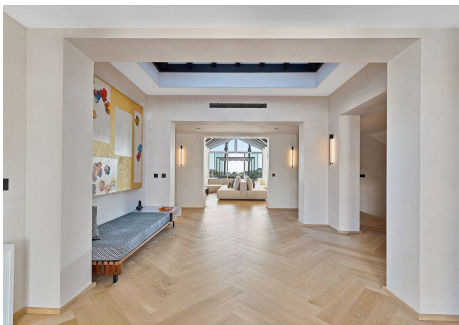
"**Spectacular Luxury Villa in Benahavís with Panoramic Sea and Mountain Views** We present this incredible villa in Benahavís, a luxury home designed to offer an exclusive and sophisticated living experience. Located in a private urbanization with ****24-hour security and a gated entrance****, this property combines contemporary design, high-quality materials, and an unbeatable location on the Costa del Sol. With ****650 m² of built space****, this villa stands out for its spacious, bright rooms equipped with the latest technology, guaranteeing maximum comfort and style. Distribution and Features - ****5 spacious bedrooms****, each with its own ****en-suite bathroom**** and ****independent air conditioning system****, providing comfort and privacy. - A spectacular ****master bedroom****, which includes a ****one-piece round marble bathtub**** situated under a dome with ****fiber optic lighting****, a true sanctuary of relaxation. - ****Guest toilet clad in marble****, adding a touch of sophistication to the common areas. - A ****modern 70 m² kitchen****, equipped with ****Gaggenau appliances**** and a ****large central island****, perfect for cooking and sharing unforgettable moments. - Spacious living room with ****fireplace****, ideal for enjoying a warm and cozy atmosphere. - ****Private cinema room****, designed for enjoying entertainment without leaving home. - ****Independent laundry room****, designed to facilitate household chores and maintain order. - ****Garage with capacity for 2 cars****, providing comfort and security. - ****Sustainable energy system with solar panels****, ensuring efficient

+34 951 123 083 | +44 (0)330 179 8687 | info@idiliqestates.com Local 28, Edificio D, Centro de Negocios Puerta de Banús, N-340, Km 175, 29660 Nueva Andlucia

IDILIQ

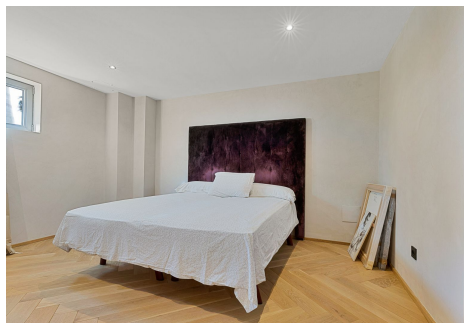
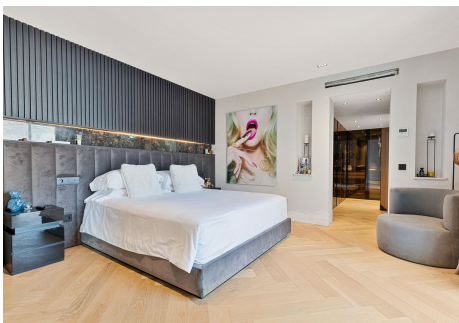
ESTATES

hot water supply. Outdoor Spaces - **Private gardens with palm trees and lawn**, providing a tropical and relaxing environment. - An impressive **90 m² saltwater pool**, ideal for enjoying the sun and Mediterranean climate in a luxurious setting. - **Terrace with barbecue and event area**, a perfect space for celebrating gatherings and outdoor dinners with family and friends. Uncomparable Views The villa offers spectacular views of the **Mediterranean Sea** and the iconic **Pico de La Concha**, creating a setting that combines natural beauty and serenity. Private Urbanization and Security Located in an exclusive urbanization, this property has **24-hour surveillance and access control**, ensuring privacy and tranquility for its residents. High-End Details - **Solid oak wood floors**, known for their warmth and durability. - Designer taps by **Gunni & Trentino** in all bathrooms, a detail that reflects luxury and sophistication. - Fully equipped kitchen with **Gaggenau appliances**, renowned for their quality and advanced technology. - **Solar panels**, promoting an efficient and sustainable lifestyle. Strategic Location - Just **5 minutes from Puerto Banús**, known for its exclusive boutiques, high-end restaurants, and vibrant nightlife. - **30 minutes from Malaga International Airport**, facilitating access to national and international destinations. This villa perfectly combines luxury, comfort, and functionality in one of the most exclusive areas of Spain. **Contact us for more information and schedule your visit. Discover your dream home in Benahavís!**



IDILIQ

ESTATES



IDILIQ

ESTATES



IDILIQ

ESTATES

