

IDILIQ

ESTATES



R4761874

 Benalmadena Pueblo

REF# R4761874 415.000 €

BEDS

2

BATHS

2

BUILT

155 m²

TERRACE

39 m²

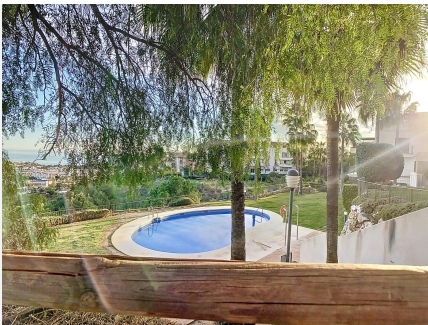
The urbanization where this penthouse is located is an oasis of tranquility and comfort. Its well-kept gardens and communal areas offer a relaxing atmosphere, perfect for disconnecting from the daily hustle and bustle. The two swimming pools available to residents are an ideal place to cool off and enjoy the Andalusian sun during the warmer months of the year. Additionally, the play area is a safe and fun space where children can play in a calm and secure manner. The location of this urbanization is another of its great attractions. Just a five-minute drive from the beach, residents can easily enjoy the sea and the sun. Furthermore, a ten-minute drive away is the highway, allowing quick access to other destinations on the Costa del Sol, such as Marbella, Fuengirola, or Malaga capital. The proximity to a gas station and several supermarkets makes daily tasks easier, while the closeness to Benalmádena pueblo and its charming old town allows you to enjoy the authentic Andalusian essence. The penthouse itself is a charming and well-distributed space. Its two bedrooms offer comfort and privacy, with the property featuring two bathrooms, one of them en suite. The living room is bright and welcoming, with direct access to the spacious terrace offering stunning views of the surroundings. From here, you can contemplate the Mediterranean Sea, the mountains of the Sierra de Mijas, and the lush golf courses that characterize the area. The fully equipped kitchen is a functional space where you can prepare delicious meals with fresh, local ingredients. Modern appliances and quality

+34 951 123 083 | +44 (0)330 179 8687 | info@idiliqestates.com Local 28, Edificio D, Centro de Negocios Puerta de Banús, N-340, Km 175, 29660 Nueva Andalucía

IDILIQ

ESTATES

finishes ensure a pleasant culinary experience for all residents. Additionally, the terrace is the perfect place to enjoy outdoor dinners or simply relax with a good book while watching the sunset. The 60-square-meter solarium is another highlight of this penthouse. With the possibility of building up to two additional rooms, this space offers endless possibilities to adapt it to the individual needs and tastes of the residents. From a private studio to a personal gym, the options are limitless. In summary, this fantastic penthouse in Benalmádena is much more than just a property. It is a home where you can enjoy life to the fullest, surrounded by natural beauty, modern comforts, and a welcoming atmosphere. Whether you're enjoying a swim in the pool, exploring the charms of the Costa del Sol, or simply relaxing on the terrace overlooking the sea, this penthouse offers an unparalleled living experience in one of Spain's most desired destinations.



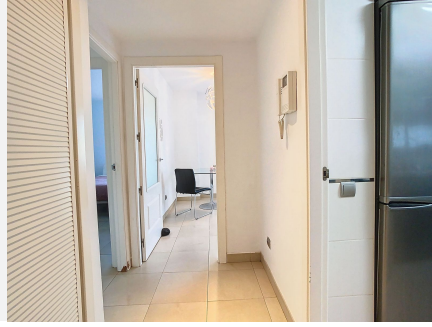
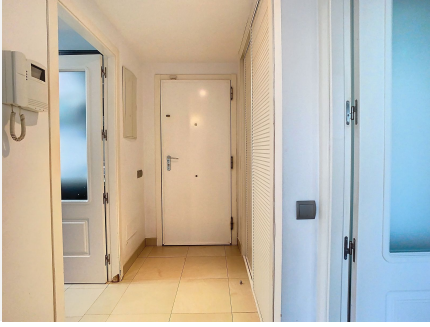
IDILIQ

ESTATES



IDILIQ

ESTATES



IDILIQ

ESTATES

