



R4646110

📍 Las Chapas

REF# R4646110 1.050.000 €

BEDS

2

BATHS

3

BUILT

435 m²

PLOT

630 m²

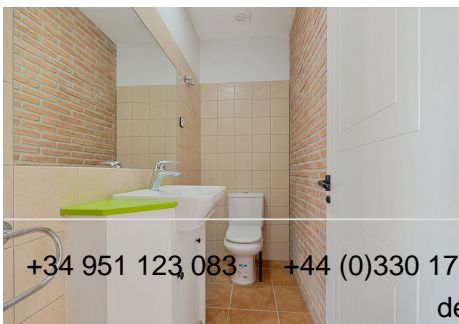
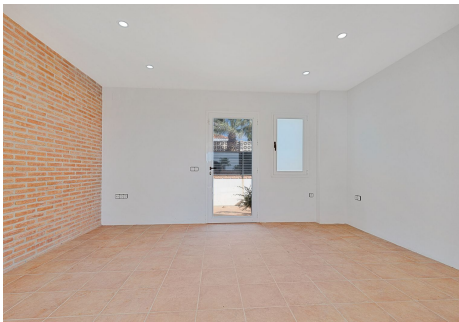
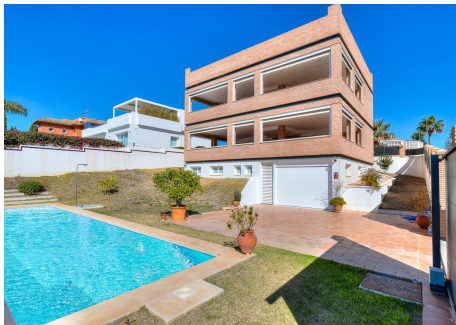
Welcome to the beauty of Mediterranean lifestyle in this stunning villa in Las Chapas, just 300 meters from Alicata beach! Enjoy breathtaking sea views and southern exposure providing sun all day long. This exclusive property is strategically built on a corner plot of 630 square meters, offering privacy and spaciousness in an idyllic setting. Upon entering, you will be amazed by the features and comfort that characterise this villa. The ground floor attribute a large covered garage and a storage room, providing convenient space for your vehicles and additional storage. Step up to the two floors, where you'll find the layout and spaces filled with natural light. The expansive panoramic terrace is the perfect spot to enjoy moments of tranquility or entertain friends and family while taking in the stunning views of the sea and horizon. With two meticulously designed bedrooms, three bathrooms, and an additional toilet, this villa offers privacy and comfort in every corner. Relax by the private pool, surrounded by the Mediterranean garden that provide peace and serenity in your own outdoor oasis. Built in 2019 to the standards of quality and equipped with air conditioning, this villa seamlessly blends elegance and functionality to offer you the perfect home. Additionally, the opportunity to acquire an additional plot of 532 square meters gives you the freedom to expand and customize this exceptional property even further according to your tastes and needs. Don't miss the chance to live this unique experience by the sea in Las Chapas. Contact us today for more information

+34 951 123 083 | +44 (0)330 179 8687 | info@idiliqestates.com Local 28, Edificio D, Centro de Negocios Puerta de Banús, N-340, Km 175, 29660 Nueva Andlucia

IDILIQ

ESTATES

and to schedule a visit to your future Mediterranean residence!



+34 951 123 083 | +44 (0)330 179 8687 | info@idiliqestates.com Local 28, Edificio D, Centro de Negocios Puerta de Banús, N-340, Km 175, 29660 Nueva Andalucía

IDILIQ

ESTATES



IDILIQ

ESTATES

