

IDILIQ

ESTATES



R4733710

📍 Benalmadena Pueblo

REF# R4733710 1.100.000 €

BEDS

10

BATHS

7

BUILT

513 m²

TERRACE

40 m²

Introducing a rare and versatile property spanning 513m², perfectly located in the charming and historic center of Benalmádena Pueblo. This unique estate is currently divided into five spacious apartments, each thoughtfully designed with comfort and style in mind. A highlight of the property is the expansive 40m² terrace, ideal for enjoying the Mediterranean climate. Key Features: - Total Area: 513m² - Terrace: 40m² - Apartments: 5 (without "división horizontal" or separate utilities) - Bedrooms: 10 - Bathrooms: 7 - Kitchens: 5 Currently, the property serves as both a residence and a rental opportunity. The owner occupies one of the elegantly decorated, high-ceilinged apartments, while the remaining four are rented out. The current tenants are aware of the potential sale and are prepared to vacate if necessary, ensuring a smooth transition for the new owner. Investment Potential: This property is an exceptional opportunity for investors looking to capitalize on the thriving holiday rental market or to transform the space into a boutique hostel. Its prime location in Benalmádena Pueblo, known for its picturesque streets and vibrant culture, makes it highly attractive to tourists. Alternatively, for those seeking a spacious family home, this property offers immense potential. With some remodeling, it can be converted into a grand residence complete with a garage. Don't miss this unique opportunity to own a piece of Benalmádena Pueblo's charm and potential. Contact us today to arrange a viewing and explore the endless possibilities this property offers.

+34 951 123 083 | +44 (0)330 179 8687 | info@idiliqestates.com Local 28, Edificio D, Centro de Negocios Puerta de Banús, N-340, Km 175, 29660 Nueva Andalucía

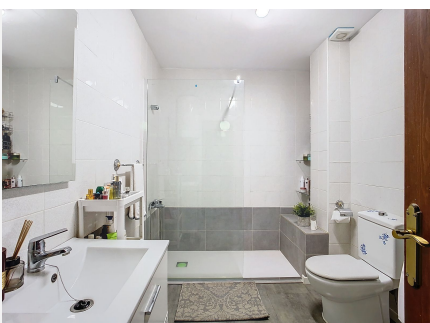
IDILIQ

ESTATES



IDILIQ

ESTATES



IDILIQ

ESTATES

