

IDILIQ

ESTATES



R4586065

📍 Estepona

REF# R4586065 795.000 €

BEDS

3

BATHS

1

BUILT

484 m²

PLOT

4841 m²

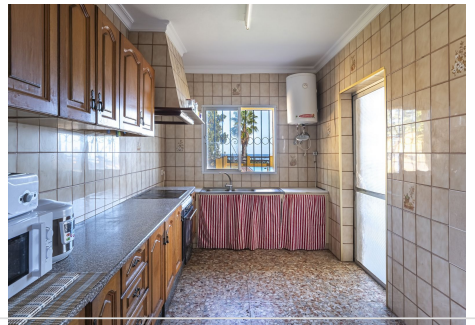
Welcome to the perfect refuge for nature and tranquility lovers! This rustic estate, with an area of 4,841m² of land, offers you a unique experience that combines the serenity of the surroundings with unparalleled views of the sea and mountains, creating a landscape that captivates the heart. The property has a charming nostalgic touch, with 481m² of construction that includes 8 agricultural outbuildings and a house in need of renovations. The main house, with 132m² and 3 bedrooms, 1 bathroom, a spacious living room with fireplace, seamlessly connects to an open kitchen. Imagine warm moments in the living room, which opens to a generous porch with direct access to a refreshing pool, creating the perfect setting for family gatherings and celebrations. But the magic doesn't end there. Discover a special corner for horse lovers, with 7 stables lined up alongside a tool shed. This space flows into a riding arena, offering you the opportunity to train and ride horses in an unparalleled setting. As you explore the 4,841m² of land, you will find the calming presence of fruit trees that add a touch of freshness and vitality to the environment. Every corner of this estate invites you to connect with nature, enjoy the sea breeze, and marvel at the stunning views surrounding the property. This rustic property has all regulated but nothing else can be built, so the main house of 132 m² cannot be made larger. The areas currently designated for stables and horses can be used for another purpose, as long as the current structure is not modified. This is not just a property; it is a

+34 951 123 083 | +44 (0)330 179 8687 | info@idiliqestates.com Local 28, Edificio D, Centro de Negocios Puerta de Banús, N-340, Km 175, 29660 Nueva Andlucia

IDILIQ

ESTATES

home full of potential, where every corner tells a story and every view offers moments of peace and contemplation. Immerse yourself in the unique essence of this property, where the connection to the land and the natural spirit intertwine to create an incomparable living experience. We invite you to discover the magic of this rustic estate and turn it into your own refuge! Location: Countryside. Condition: Needs Renovation. Pool: Private. Heating: Fireplace. Views: Sea, Mountain, Countryside, Panoramic. Features: Private Terrace. Kitchen: Equipped. Garden: Private, Landscaped. Security: Gated Complex. Parking: More than one. Category: Holiday Homes.



IDILIQ

ESTATES

